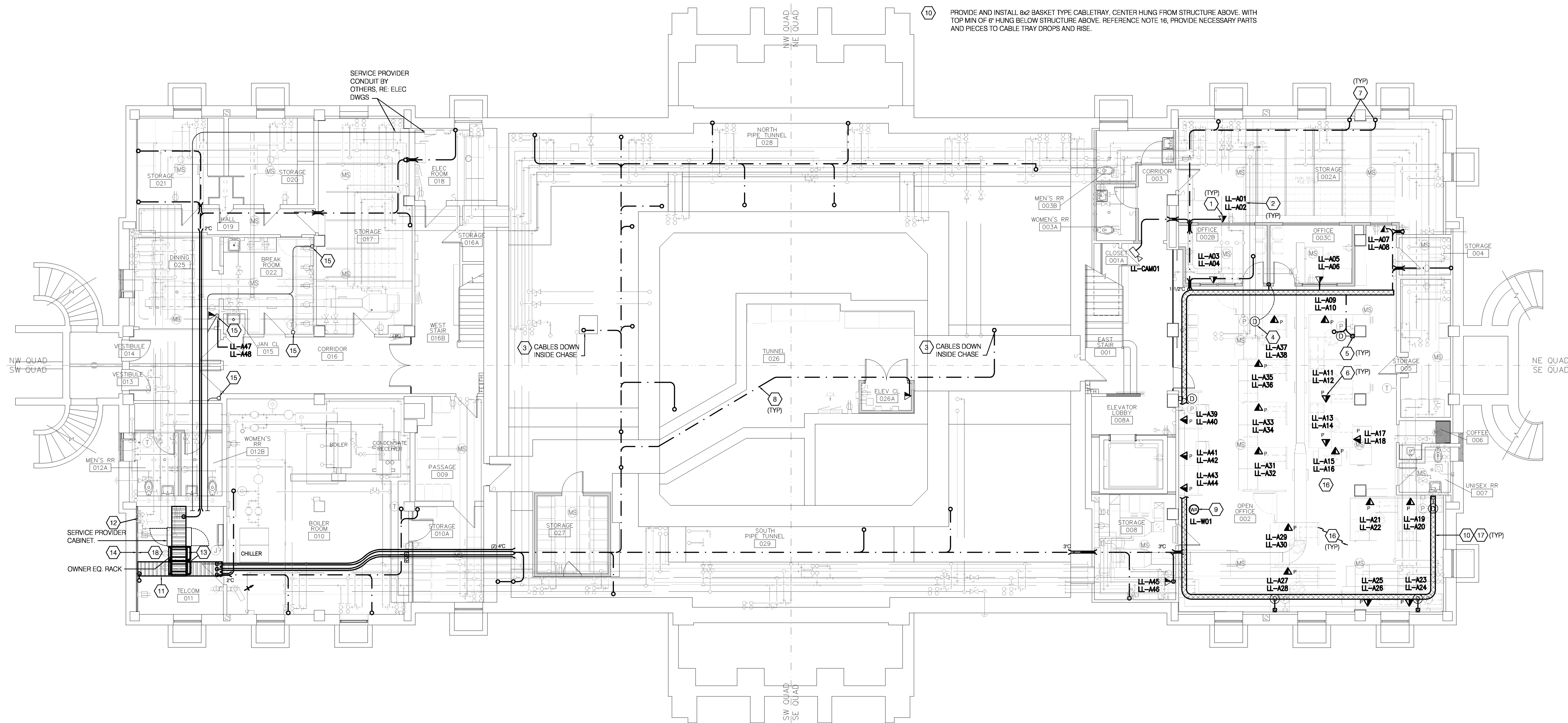


MECH / PLUMB / ELECTRICAL ENGINEER:

LANKFORD + associates
1730 WALNUT STREET
KANSAS CITY, MISSOURI 64108
TEL. (816) 221-1411
FAX. (816) 221-1429

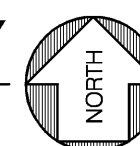
FLOOR PLAN NOTES

- 1 ROUGH-IN AND WIREMOLD STUBBED UP TO CEILING INSTALLED BY E.C. PROVIDE FACEPLATE AND JACKS PER SPECIFICATIONS.
- 2 CABLE ID NUMBER TO EACH WORKSTATION.
- 3 ROUTE CABLES UP AND DOWN WITH IN EXISTING CHASE AS REQUIRED. SUPPORT CABLES AND REQUIRED.
- 4 FLOOR BOX DEVICE PROVIDED AND INSTALLED BY OTHERS WITH CONDUIT PATHWAY. COORDINATE WITH E.C. FOR CORRECT TYPE OF KEY-STONE JACKS TO PROVIDE.
- 5 PROVIDE AND INSTALL FACEPLATE WITH 2" KNOCK OUT OPENING. INSTALL RUBBER/NYLON BUSHING IN OPENING PRIOR TO INSTALLING CABLES. ROUTE CABLES THRU FURNITURE SPINE, REFERENCE DETAIL FOR ADDITIONAL INFORMATION AND REQUIREMENTS.
- 6 PROVIDE AND INSTALL PARTITION FURNITURE FACEPLATE. COORDINATE WITH FURNITURE MANUFACTURERS FOR PROPER STYLE.
- 7 ROUTE CABLES UP TO FLOOR ABOVE FOR LOW VOLTAGE DROP LOCATION.
- 8 HORIZONTAL UTP CABLE PATHWAY. REFERENCE SPECS CABLE TYPE. INSTALL J-HOOKS AS REQUIRED PER SPECIFICATIONS. MIN. OF 4'-0" O.C.
- 9 WIRELESS ACCESS POINT, EQUIPMENT PROVIDED BY OTHERS. COORDINATE WITH OWNER PRIOR TO PULLING AND TERMINATING CABLES FOR EXACT LOCATION.
- 10 PROVIDE AND INSTALL 8x2 BASKET TYPE CABLETRAY. CENTER HUNG FROM STRUCTURE ABOVE. WITH TOP MIN OF 6" HUNG BELOW STRUCTURE ABOVE. REFERENCE NOTE 16, PROVIDE NECESSARY PARTS AND PIECES TO CABLE TRAY DROPS AND RISE.
- 11 PROVIDE AND INSTALL 2x2 LADDER TYPE CABLE TRAY. INSTALL AT 8'-0" AFF. SUPPORT CABLE TRAY FROM FROM WALL AND STRUCTURE ABOVE. PROVIDE CABLE DROP OUTS (2) AT OWNER EQ. RACK, (2) AT SERVICE PROVIDER CABINET AND (2) AT THE TELEPHONE WALL FIELD.
- 12 GROUND BAR PROVIDE AND INSTALLED BY OTHERS E.C.
- 13 FLOOR MOUNTED RACK REFERENCE SPECIFICATION. INSTALL (1) NO. 6 GROUND WIRE FROM EACH RACK TO GROUND BAR WITH IN THIS ROOM. GROUND WIRE CAN BE DAISY BETWEEN RACKS ONLY.
- 14 TELEPHONE TERMINAL PLYWOOD WALL FIELD PROVIDE AND INSTALLED BY OTHERS.
- 15 CABLES INSTALLED INSIDE CONDUIT FROM OUTLET DEVICE ON FIRST FLOOR TO TELECOM 011. COORDINATE WITH ELECTRICAL CONTRACTOR FOR CONDUIT.
- 16 DO TO THE NUMBER OF SPECIAL COORDINATION AND EQUIPMENT THAT WILL BE INSTALLED IN THIS AREA. CONTRACTOR SHALL COORDINATE ROUTING WITH OTHER TRADES PRIOR TO INSTALLATION.
- 17 CABLETRAY TO BE PAINTED WHITE PRIOR TO INSTALLING CABLES.
- 18 PROVIDE AND INSTALL (2) 66-BLOCK ON WALL FIELDS, FROM 66-BLOCKS INSTALL (1) 25-PAIR CAT.3 BUNDLE GENERAL CABLE NO.2133033 (OR AN APPROVED EQUAL) TO 48-PORT ANALOG PATCH PANEL, TERMINATE AND TEST. SYSTEM USED FOR USER CROSS CONNECTION TO ANALOG LINE.



LOWER LEVEL FLOOR PLAN-TECHNOLOGY

SCALE: 1/8"=1'-0"



Consulting Engineers, Inc.
1730 Walnut Street
Kansas City, Missouri 64108
1915 Frederick Avenue
St. Joseph, Missouri 64501
Phone: 816.221.1411 / Fax: 816.221.1429
COPYRIGHT © 2012 LANKFORD + ASSOCIATES, INC.
L+e Project No. 4048

HISTORIC TRUMAN COURTHOUSE INTERIOR RENOVATION

102 NORTH MAIN STREET, INDEPENDENCE, MISSOURI 64050

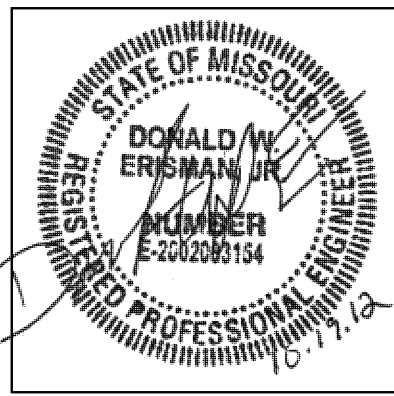
ISSUED FOR
CONSTRUCTION

PROJECT NO.	
DATE	10-19-2012
DRAWN BY	IDB/SMP
CHECKED BY	DWE
CHECKED BY	LDR
REVISED DATE	DESCRIPTION

SHEET TITLE & NUMBER
LOWER LEVEL
FLOOR PLAN
TECHNOLOGY

COPYRIGHT © 2012
PIPER-WIND ARCHITECTS, INC.

T-100

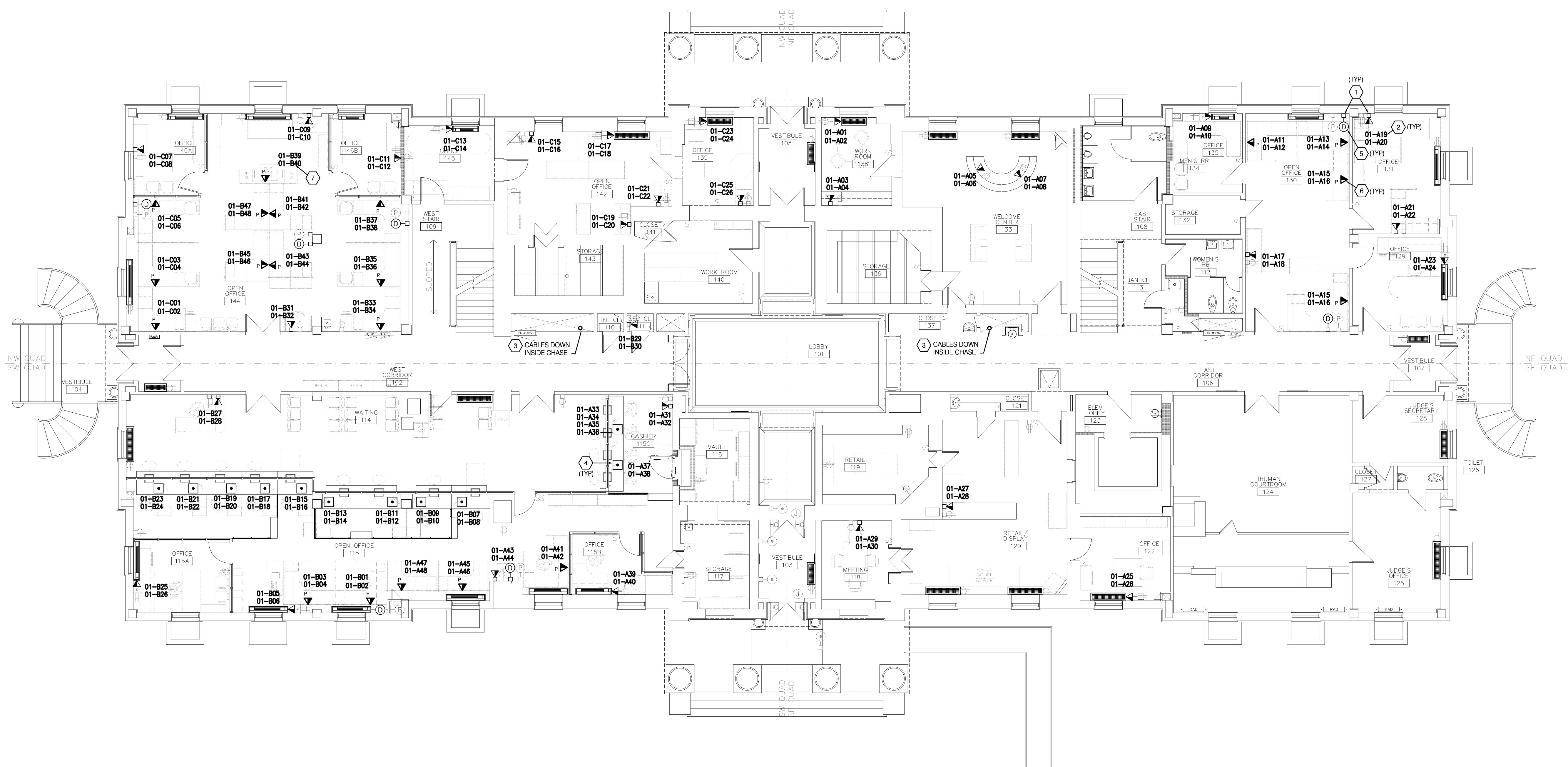


MECH / PLUMB / ELECTRICAL ENGINEER:

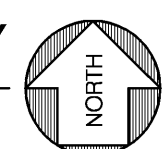
LANKFORD + associates
 1730 WALNUT STREET
 KANSAS CITY, MISSOURI 64108
 TEL. (816) 221-1411
 FAX. (816) 221-1429

FLOOR PLAN NOTES

- 1 ROUGH-IN AND WIREMOLD STUBBED UP FROM FLOOR BELOW INSTALLED BY E.C. PROVIDE FACEPLATE AND JACKS PER SPECIFICATIONS.
- 2 CABLE ID NUMBER TO EACH WORKSTATION.
- 3 ROUTE CABLES U AND DOWN WITH IN EXISTING CHASE AS REQUIRED. SUPPORT CABLES AND REQUIRED.
- 4 FLOOR BOX / POKE THRU DEVICE PROVIDED AND INSTALLED BY OTHERS. COORDINATE WITH E.C. FOR CORRECT TYPE OF KEY-STONE JACKS TO PROVIDE.
- 5 PROVIDE AND INSTALL FACEPLATE WITH 2" KNOCK OUT OPENING, INSTALL RUBBER/NYLON BUSHING IN OPENING PRIOR TO INSTALLING CABLES, ROUTE CABLES THRU FURNITURE SPINE, REFERENCE DETAIL FOR ADDITIONAL INFORMATION AND REQUIREMENTS.
- 6 PROVIDE AND INSTALL PARTITION FURNITURE FACEPLATE, COORDINATE WITH FURNITURE MANUFACTURERS FOR PROPER STYLE.
- 7 SECOND JACK TO HAVE ANALOG JACK COLOR.



FIRST FLOOR PLAN-TECHNOLOGY
 SCALE: 1/8" = 1'-0"



HISTORIC TRUMAN COURTHOUSE
 INTERIOR RENOVATION
 102 NORTH MAIN STREET, INDEPENDENCE, MISSOURI 64050

ISSUED FOR CONSTRUCTION

PROJECT NO.	10-19-2012
DATE	10-19-2012
DRAWN BY	JD/SMP
CHECKED BY	DWE
CHECKED BY	LDR
REVISED DATE	DESCRIPTION

SHEET TITLE & NUMBER

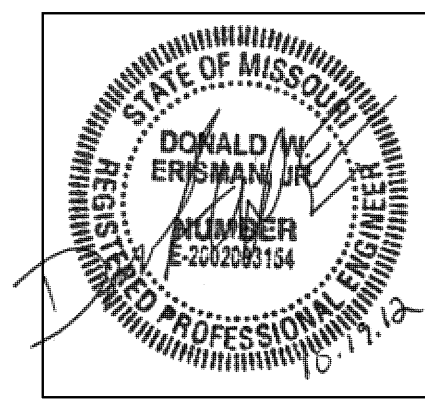
FIRST FLOOR
 PLAN TECHNOLOGY

COPYRIGHT © 2012
 PIPER-WIND ARCHITECTS, INC.



T-101.1

DWG FILE: P:\0020\048_Jackson County Historic Court House\Drawings\K48T101.dwg USER: Bhardwaj PLOT DATE/TIME: 10/19/2012 2:03pm

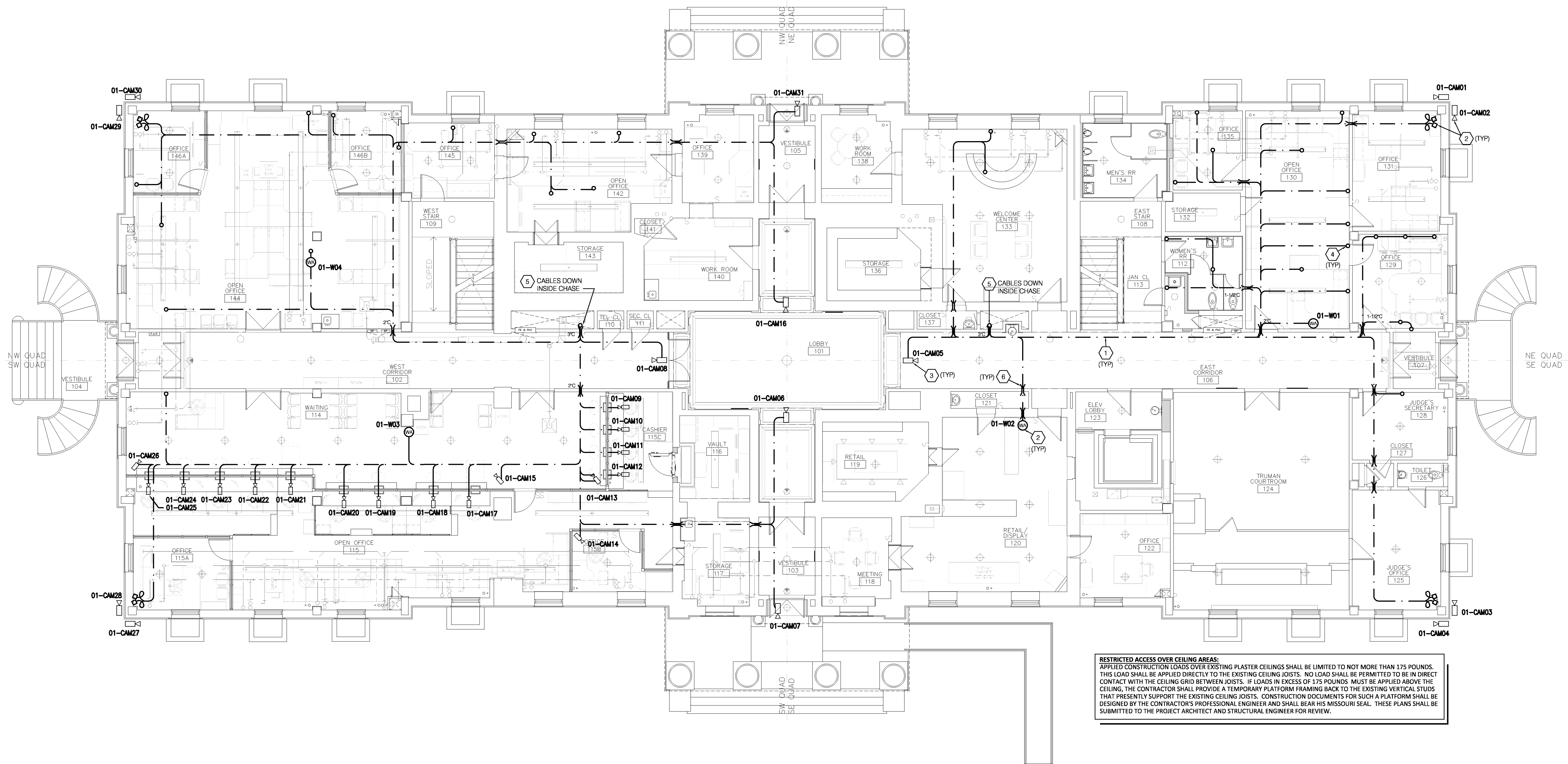


MECH / PLUMB / ELECTRICAL ENGINEER:

LANKFORD + associates
1730 WALNUT STREET
KANSAS CITY, MISSOURI 64108
TEL. (816) 221-1411
FAX. (816) 221-1429

FLOOR PLAN NOTES

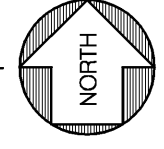
- 1 HORIZONTAL UTP CABLE PATHWAY. PROVIDE AND INSTALL J-HOOKS AS REQUIRED. CABLES INSTALLED / ROUTED ABOVE CEILING TO FEED SECOND FLOOR LOW VOLTAGE DEVICES AND FIRST FLOOR WIRELESS ACCESS POINTS.
- 2 WIRELESS ACCESS POINT, EQUIPMENT PROVIDED BY OTHERS. COORDINATE WITH OWNER PRIOR TO PULLING AND TERMINATING CABLES FOR EXACT LOCATION.
- 3 TERMINATE CABLE AT POE SECURITY CAMERA PROVIDED BY AND INSTALLED BY OTHERS. COORDINATE LOCATION OF DEVICE BY OTHERS.
- 4 ROUTE CABLES UP TO FLOOR ABOVE FOR LOW VOLTAGE DROP LOCATION.
- 5 ROUTE CABLES UP AND DOWN IN EXISTING CHASE SUPPORT CABLES WITH IN EXISTING CHASE AS REQUIRED.
- 6 PROVIDE AND INSTALL 1" CONDUIT SLEEVE THRU EXISTING WALL. PROVIDE NYLON BUSHING ON BOTH ENDS PRIOR TO PULLING CABLE. (UNLESS NOTED OTHERWISE)



RESTRICTED ACCESS OVER CEILING AREAS:
 APPLIED CONSTRUCTION LOADS OVER EXISTING PLASTER CEILINGS SHALL BE LIMITED TO NOT MORE THAN 175 POUNDS. THIS LOAD SHALL BE APPLIED DIRECTLY TO THE EXISTING CEILING JOISTS. NO LOAD SHALL BE PERMITTED TO BE IN DIRECT CONTACT WITH THE CEILING GRID BETWEEN JOISTS. IF LOADS IN EXCESS OF 175 POUNDS MUST BE APPLIED ABOVE THE CEILING, THE CONTRACTOR SHALL PROVIDE A TEMPORARY PLATFORM FRAMING BACK TO THE EXISTING VERTICAL STUDS THAT PRESENTLY SUPPORT THE EXISTING CEILING JOISTS. CONSTRUCTION DOCUMENTS FOR SUCH A PLATFORM SHALL BE DESIGNED BY THE CONTRACTOR'S PROFESSIONAL ENGINEER AND SHALL BEAR HIS MISSOURI SEAL. THESE PLANS SHALL BE SUBMITTED TO THE PROJECT ARCHITECT AND STRUCTURAL ENGINEER FOR REVIEW.

FIRST FLOOR-ABOVE CEILING, BELOW SECOND FLOOR SLAB-TECHNOLOGY

SCALE: 1/8" = 1'-0"



HISTORIC TRUMAN COURTHOUSE

INTERIOR RENOVATION

102 NORTH MAIN STREET, INDEPENDENCE, MISSOURI 64050

ISSUED FOR CONSTRUCTION

PROJECT NO.	
DATE	10-19-2012
DRAWN BY	LD/SMP
CHECKED BY	DWE
CHECKED BY	LDR
REVISED DATE	DESCRIPTION

SHEET TITLE & NUMBER

FIRST FLOOR
 CEILING PLAN
 TECHNOLOGY
 COPYRIGHT © 2012
 PIPER-WIND ARCHITECTS, INC.

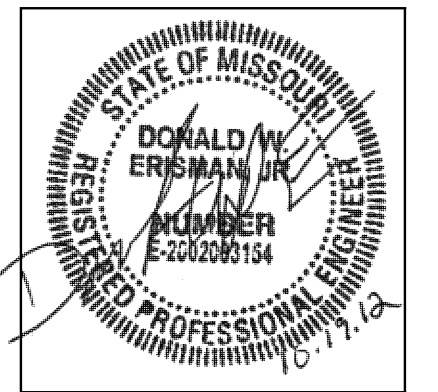


T-101.2

DWG FILE: P:\0020\0408_Jackson County Historic Court House\Drawings\K4648T101.2.dwg USER: Bhardwaj PLOT DATE/TIME: 10/19/2012 2:03pm

FLOOR PLAN NOTES

- 1 ROUGH-IN AND WIREMOLD STUBBED UP FROM FLOOR BELOW INSTALLED BY E.C. PROVIDE FACEPLATE AND JACKS PER SPECIFICATIONS.
- 2 CABLE ID NUMBER TO EACH WORKSTATION.
- 3 ROUTE CABLES U AND DOWN WITH IN EXISTING CHASE AS REQUIRED. SUPPORT CABLES AND REQUIRED.
- 4 FLOOR BOX / POKE THRU DEVICE PROVIDED AND INSTALLED BY OTHERS. COORDINATE WITH E.C. FOR CORRECT TYPE OF KEY-STONE JACKS TO PROVIDE.



MECH / PLUMB / ELECTRICAL ENGINEER:

LANKFORD + associates
 1730 WALNUT STREET
 KANSAS CITY, MISSOURI 64108
 TEL. (816) 221-1411
 FAX. (816) 221-1429

HISTORIC TRUMAN COURTHOUSE

INTERIOR RENOVATION

102 NORTH MAIN STREET, INDEPENDENCE, MISSOURI 64050

ISSUED FOR CONSTRUCTION

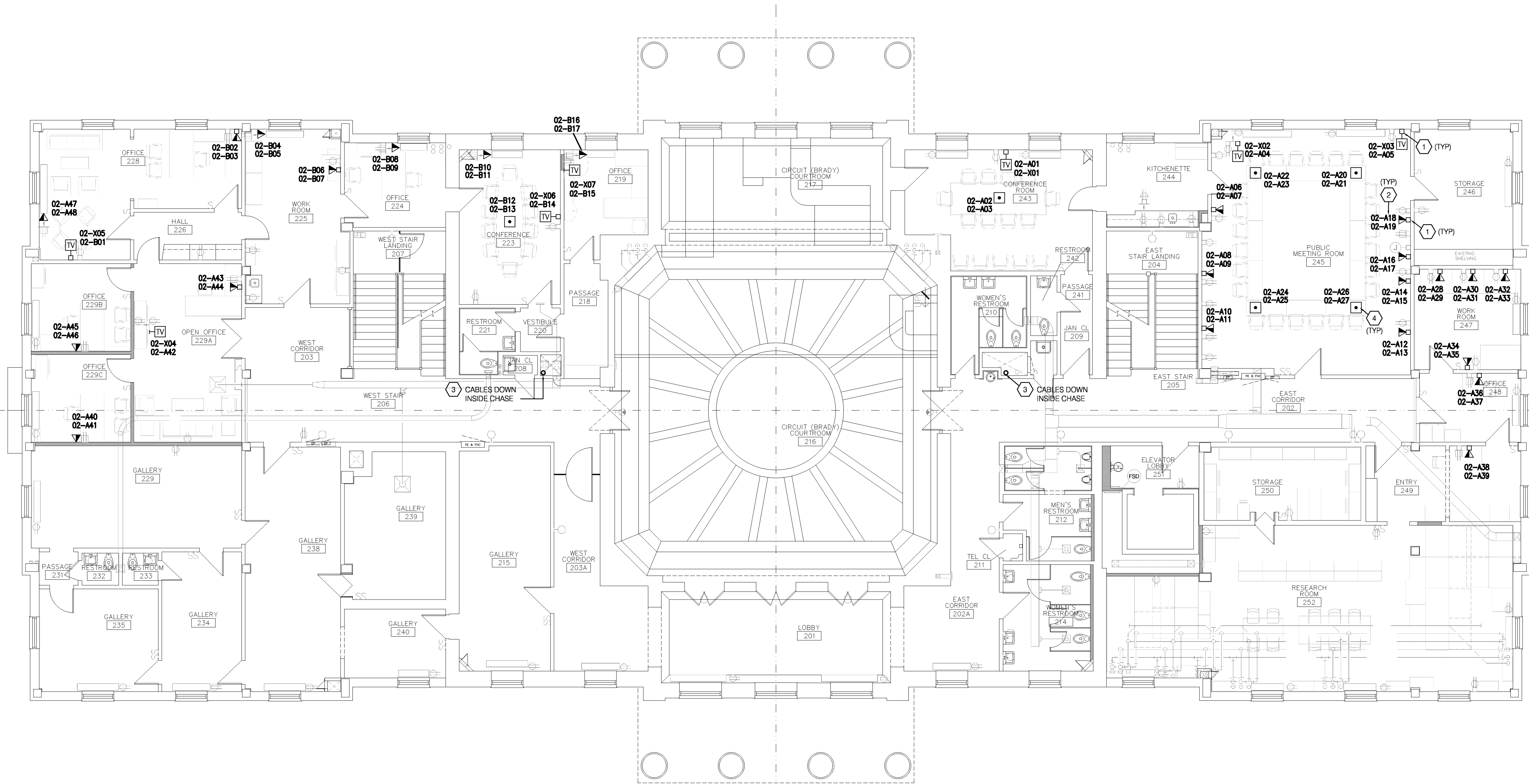
PROJECT NO.	
DATE	10-19-2012
DRAWN BY	IDB/SMP
CHECKED BY	DWE
CHECKED BY	LDR
REVISED DATE	DESCRIPTION

SHEET TITLE & NUMBER

SECOND FLOOR
 PLAN TECHNOLOGY

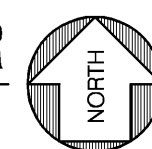
COPYRIGHT © 2012
 PIPER-WIND ARCHITECTS, INC.

T-102.1



SECOND FLOOR PLAN-POWER

SCALE: 1/8"=1'-0"



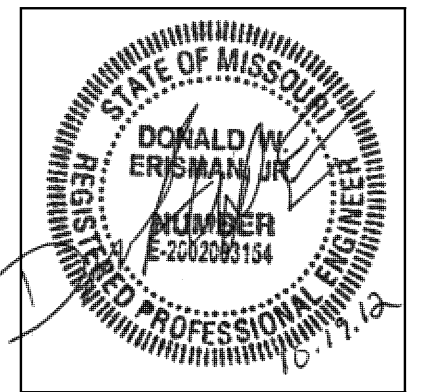
DWG FILE: P:\40200\048_Jackson County Historic Court House\Drawings\4048T102_1.dwg USER: Brian D. Plot DATE/TIME: 10/19/2012 2:28pm



DWG FILE: P:\40200\0403_Jackson County Historic Court House\Drawings\40487102.2.dwg USER: Brian D Plot DATE/TIME: 10/19/2012 2:28pm

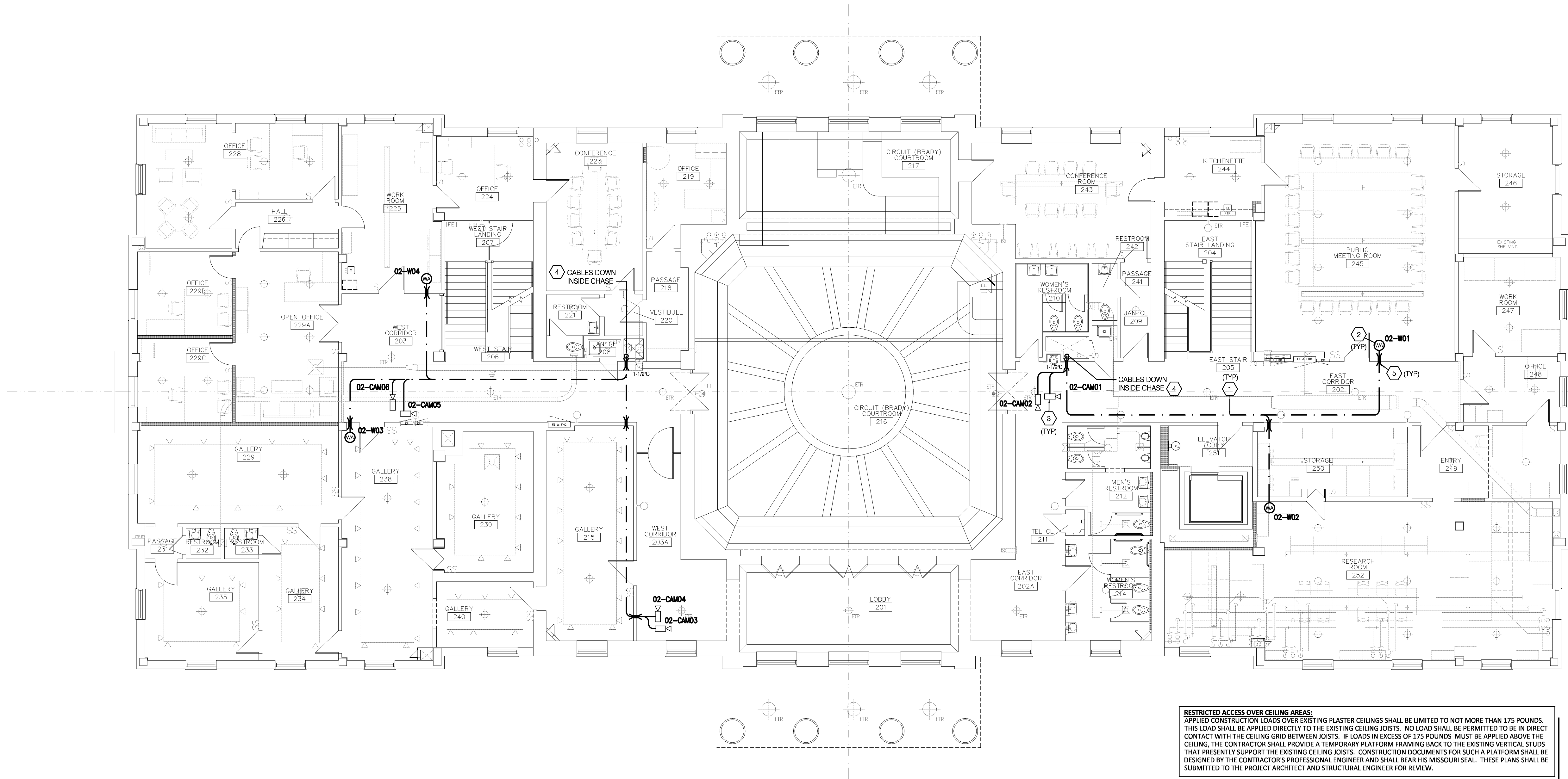
FLOOR PLAN NOTES

- 1 HORIZONTAL UTP CABLE PATHWAY. PROVIDE AND INSTALL J-HOOKS AS REQUIRED. CABLES INSTALLED / ROUTED ABOVE CEILING TO FEED SECOND FLOOR LOW VOLTAGE DEVICES AND FIRST FLOOR WIRELESS ACCESS POINTS.
- 2 WIRELESS ACCESS POINT, EQUIPMENT PROVIDED BY OTHERS. COORDINATE WITH OWNER PRIOR TO PULLING AND TERMINATING CABLES FOR EXACT LOCATION.
- 3 TERMINATE CABLE AT POE SECURITY CAMERA PROVIDED BY AND INSTALLED BY OTHERS. COORDINATE LOCATION OF DEVICE BY OTHERS.
- 4 ROUTE CABLES DOWN TO FLOOR BELOW SUPPORT CABLES WITH IN EXISTING CHASE AS REQUIRED.
- 5 PROVIDE AND INSTALL 1" CONDUIT SLEEVE THRU EXISTING WALL. PROVIDE NYLON BUSHING ON BOTH ENDS PRIOR TO PULLING CABLE. (UNLESS NOTED OTHERWISE)



MECH / PLUMB / ELECTRICAL ENGINEER:

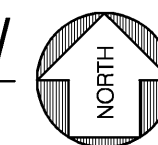
LANKFORD + associates
 1730 WALNUT STREET
 KANSAS CITY, MISSOURI 64108
 TEL. (816) 221-1411
 FAX. (816) 221-1429



RESTRICTED ACCESS OVER CEILING AREAS:
 APPLIED CONSTRUCTION LOADS OVER EXISTING PLASTER CEILINGS SHALL BE LIMITED TO NOT MORE THAN 175 POUNDS. THIS LOAD SHALL BE APPLIED DIRECTLY TO THE EXISTING CEILING JOISTS. NO LOAD SHALL BE PERMITTED TO BE IN DIRECT CONTACT WITH THE CEILING GRID BETWEEN JOISTS. IF LOADS IN EXCESS OF 175 POUNDS MUST BE APPLIED ABOVE THE CEILING, THE CONTRACTOR SHALL PROVIDE A TEMPORARY PLATFORM FRAMING BACK TO THE EXISTING VERTICAL STUDS THAT PRESENTLY SUPPORT THE EXISTING CEILING JOISTS. CONSTRUCTION DOCUMENTS FOR SUCH A PLATFORM SHALL BE DESIGNED BY THE CONTRACTOR'S PROFESSIONAL ENGINEER AND SHALL BEAR HIS MISSOURI SEAL. THESE PLANS SHALL BE SUBMITTED TO THE PROJECT ARCHITECT AND STRUCTURAL ENGINEER FOR REVIEW.

SECOND FLOOR-ABOVE CEILING, BELOW ATTIC SPACE-TECHNOLOGY

SCALE: 1/16" = 1'-0"



HISTORIC TRUMAN COURTHOUSE

INTERIOR RENOVATION

102 NORTH MAIN STREET, INDEPENDENCE, MISSOURI 64050

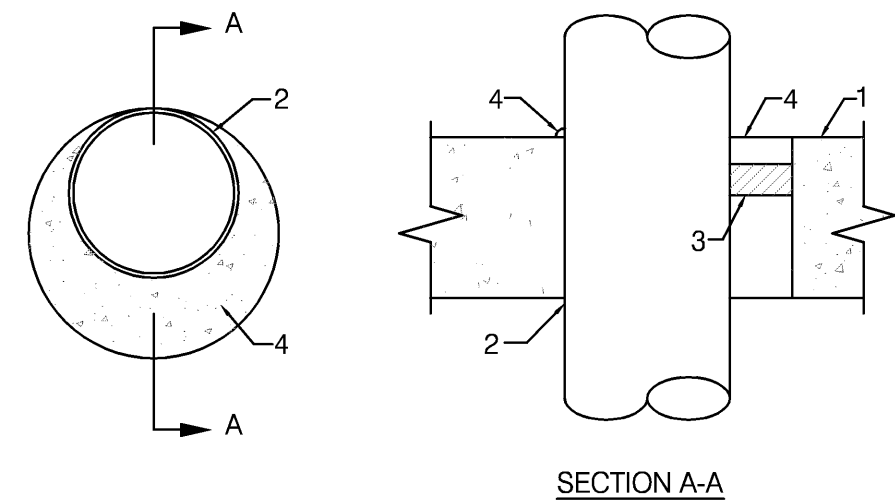
ISSUED FOR CONSTRUCTION

PROJECT NO.	DATE
	10-19-2012
DRAWN BY	DATE
JDB/SMP	
CHECKED BY	DATE
DWE	
CHECKED BY	DATE
LDR	
REVISED DATE	DESCRIPTION

SHEET TITLE & NUMBER
 SECOND FLOOR
 CEILING PLAN
 TECHNOLOGY
 COPYRIGHT © 2012
 PIPER-WIND ARCHITECTS, INC.



T-102.2



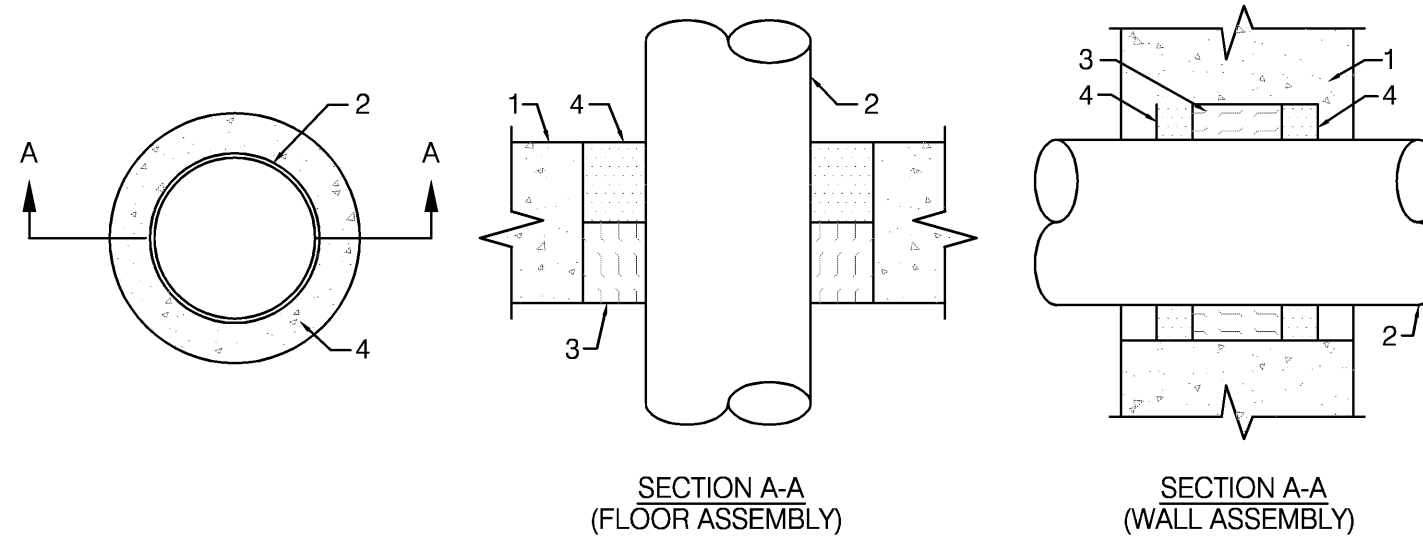
SYSTEM NO. 49
F RATINGS - 2 AND 3 HR. (SEE ITEM 2A)
T RATING - 0 HR.

- 1.) FLOOR OR WALL ASSEMBLY - MINIMUM 4 1/2" THICK LIGHTWEIGHT OR NORMAL WEIGHT (100-150 PCF) CONCRETE. WALL ASSEMBLY MAY ALSO BE CONSTRUCTED OF ANY UL CLASSIFIED CONCRETE BLOCKS. MAXIMUM DIAMETER OF CIRCULAR THROUGH OPENING IS 22 1/2". SEE CONCRETE BLOCK (CAZT) CATEGORY IN FIRE RESISTANCE DIRECTORY FOR NAMES OF MANUFACTURERS.
- 1A.) STEEL SLEEVE - (OPTIONAL, NOT SHOWN) - NOMINAL 12" DIAMETER (OR SMALLER) SCHEDULE 40 (OR HEAVIER) STEEL PIPE SLEEVE CAST INTO CONCRETE FLOOR OR WALL. SLEEVE TO BE FLUSH WITH OR PROJECT MAX 2" FROM TOP SURFACE OF FLOOR OR FROM BOTH SURFACES OF WALL.
- 2.) PIPE OR CONDUIT - NOMINAL 20" DIAMETER (OR SMALLER) SCHEDULE 10S (OR HEAVIER) STEEL PIPE, NOMINAL 6" DIAMETER (OR SMALLER) RIGID STEEL CONDUIT, NOMINAL 6" DIAMETER (OR SMALLER) TYPE L (OR HEAVIER) COPPER TUBE, NOMINAL 4" DIAMETER (OR SMALLER) CAST IRON PIPE OR NOMINAL 4" DIAMETER (OR SMALLER) STEEL EMT. MAXIMUM ONE PIPE OR CONDUIT PER THROUGH OPENING. MAXIMUM ANNULAR SPACE BETWEEN PIPE OR CONDUIT AND EDGE OF THROUGH OPENING IS ZERO IN (POINT CONTACT). PIPE OR CONDUIT TO BE RIGIDLY SUPPORTED ON BOTH SIDES OF FLOOR OR WALL ASSEMBLY.
- 2A.) STEEL VENT DUCT - (NOT SHOWN) - AS AN ALTERNATE TO THE PIPE OR CONDUIT, NOMINAL 4" DIAMETER (OR SMALLER) NO. 28 GAUGE (OR HEAVIER) GALVANIZED STEEL VENT DUCT MAY BE USED IN THROUGH OPENINGS OF FLOOR ASSEMBLIES PROVIDED MAXIMUM ANNULAR SPACE DOES NOT EXCEED 7/8". WHEN STEEL VENT DUCT IS USED, F RATING IS 2 HRS.
- 3.) PACKING MATERIAL - POLYETHYLENE BACKER ROD OR NOMINAL 1" THICKNESS OF TIGHTLY-PACKED CERAMIC (ALUMINA SILICA) FIBER BLANKET, MINERAL-WOOL BATT OF GLASS FIBER INSULATION MATERIAL USED AS A PERMANENT FORM. PACKING MATERIAL TO BE RECESSED FROM TOP SURFACE OF FLOOR OR FROM BOTH SURFACES OF WALL AS REQUIRED TO ACCOMMODATE THE REQUIRED THICKNESS OF CAULK FILL MATERIAL (ITEM 4). AS AN ALTERNATE WHEN MAXIMUM PIPE SIZE IS 10" DIAMETER AND WHEN MAXIMUM ANNULAR SPACE IS 1" OR LESS, A MINIMUM 1" THICKNESS OF TIGHTLY-PACKED CERAMIC FIBER BLANKET OR MINERAL-WOOL BATT PACKING MATERIAL MAY BE RECESSED MINIMUM 1/2" FROM BOTTOM SURFACE OF FLOOR OR FROM EITHER SIDE OF WALL.
- 4.) FILL, VOID OR CAVITY MATERIALS* - CAULK - APPLIED TO FILL THE ANNULAR SPACE TO THE MINIMUM THICKNESS SHOWN IN THE FOLLOWING TABLE:

MAXIMUM PIPE DIAMETER, (IN.)	MAXIMUM ANNULAR SPACE (IN.)	PACKING MATERIAL TYPE (a)	MINIMUM CAULK THICKNESS (IN.)
10	1	BR, CF, GF or MW	1/2 (b)
10	1	CF or MW	1/2 (c)
20	2 1/2	BR, CF, GF or MW	1 (b)

- (a.) BR = POLYETHYLENE BACKER ROD.
CF = CERAMIC FIBER BLANKET.
GF = GLASS FIBER INSULATION.
MW = MINERAL-WOOL BATT.
- (b.) CAULK INSTALLED FLUSH WITH TOP SURFACE OF FLOOR OR BOTH SURFACE OF WALL.
- (c.) CAULK INSTALLED FLUSH WITH BOTTOM SURFACE OF FLOOR OR ONE SURFACE OF WALL.

* BEARING THE UL CLASSIFICATION MARKING



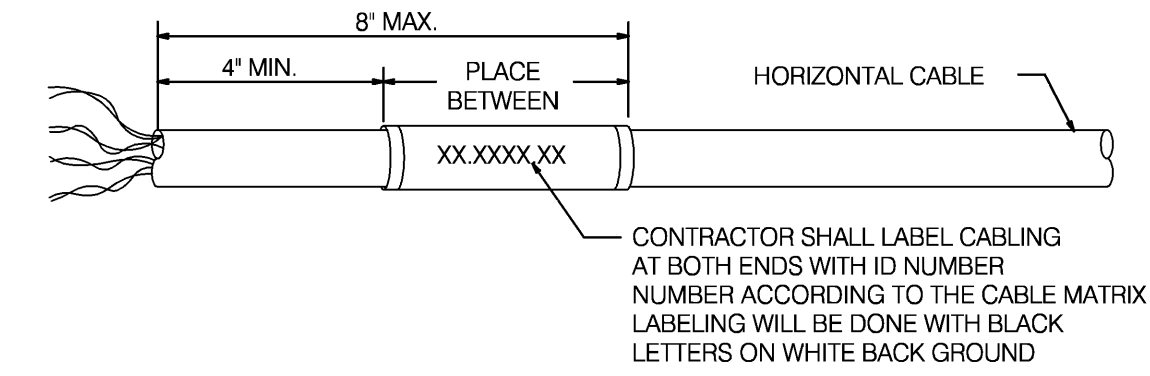
SYSTEM NO. CAJ1012
(FORMERLY SYSTEM NO. 129)
F RATINGS - 1 HR.
T RATING - 0 HR.

- 1.) FLOOR OR WALL ASSEMBLY - MINIMUM 5" THICK REINFORCED NORMAL WEIGHT (100-150 PCF) CONCRETE. WALL MAY ALSO BE CONSTRUCTED OF ANY UL CLASSIFIED CONCRETE BLOCKS*. MAXIMUM DIAMETER OF OPENING IS 6". SEE CONCRETE BLOCKS (CAZT) CATEGORY IN THE FIRE RESISTANCE DIRECTORY FOR NAMES OF MANUFACTURERS.
- 2.) THROUGH PENETRANTS - ONE METALLIC PIPE OR CONDUIT TO BE CENTERED WITHIN THE FIRESTOP SYSTEM. A NOMINAL ANNULAR SPACE OF 3/4" IS REQUIRED WITHIN THE FIRESTOP SYSTEM. PIPE OR CONDUIT TO BE RIGIDLY SUPPORTED ON BOTH SIDES OF FLOOR OR WALL ASSEMBLY. THE FOLLOWING TYPES AND SIZES OF METALLIC PIPES OR CONDUITS MAY BE USED:
A. STEEL PIPE - NOMINAL 4" DIAMETER (OR SMALLER) SCHEDULE 5 (OR HEAVIER) STEEL PIPE
B. CONDUIT - NOMINAL 4" DIAMETER (OR SMALLER) ELECTRICAL METALLIC TUBING OR STEEL CONDUIT.
- 3.) PACKING MATERIAL - MINIMUM 3" THICKNESS OF MINIMUM 4.4 PCF MINERAL WOOL BATT INSULATION FIRMLY PACKED INTO OPENING AS A PERMANENT FORM. PACKING MATERIAL TO BE RECESSED FROM TOP SURFACE OF FLOOR AS REQUIRED TO ACCOMMODATE THE REQUIRED THICKNESS OF FILL MATERIAL. PACKING MATERIAL TO BE CENTERED IN WALL'S MID-DEPTH AND RECESSED TO ALLOW FOR INSTALLATION OF FILL MATERIAL.
- 4.) FILL, VOID OR CAVITY MATERIAL* - SEALANT OR FOAM - MINIMUM 1/2" THICKNESS OF FILL MATERIAL APPLIED WITHIN ANNULUS, FLUSH WITH TOP SURFACE OF FLOOR. IN WALL, FILL MATERIAL TO BE APPLIED ON EACH SIDE OF PACKING MATERIAL. FOAMED SILICONE TO BE INSTALLED AS DESCRIBED IN THE MANUFACTURERS APPLICATION INSTRUCTIONS AT A DENSITY OF 14 PCF MINIMUM TO 21 PCF MAXIMUM. THE THICKNESS OF FILL MATERIAL IS DEPENDENT UPON THE TYPE OF FILL MATERIAL AS SHOWN IN THE TABLE BELOW.

FILL MATERIAL IDENTIFICATION	MINIMUM THICK OF FILL MATERIAL, (IN.)
TYPE FS FOAM	1
TYPE FS SEALANT OR FS SEALANT SL	1/2

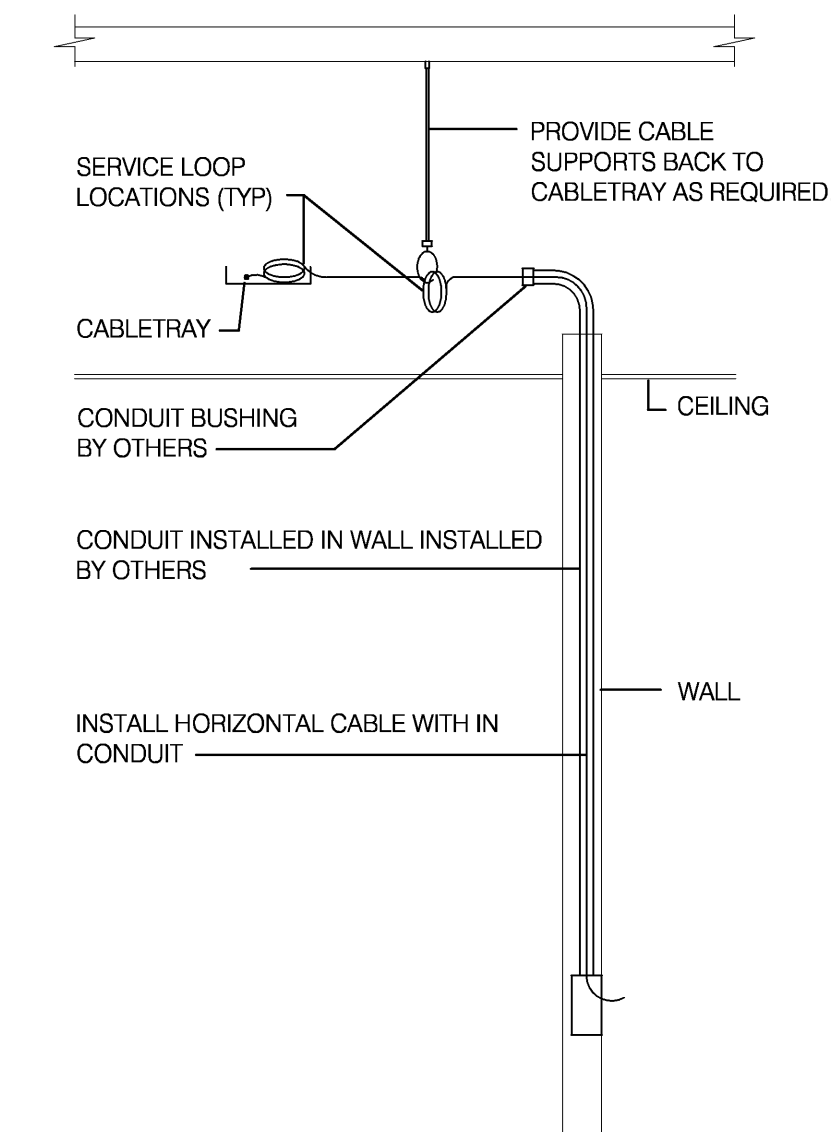
DOW CORNING CORP. - TYPES FS SEALANT, FS SEALANT SL (FLOOR ONLY) OR FS FOAM

* BEARING THE UL CLASSIFICATION MARKING.



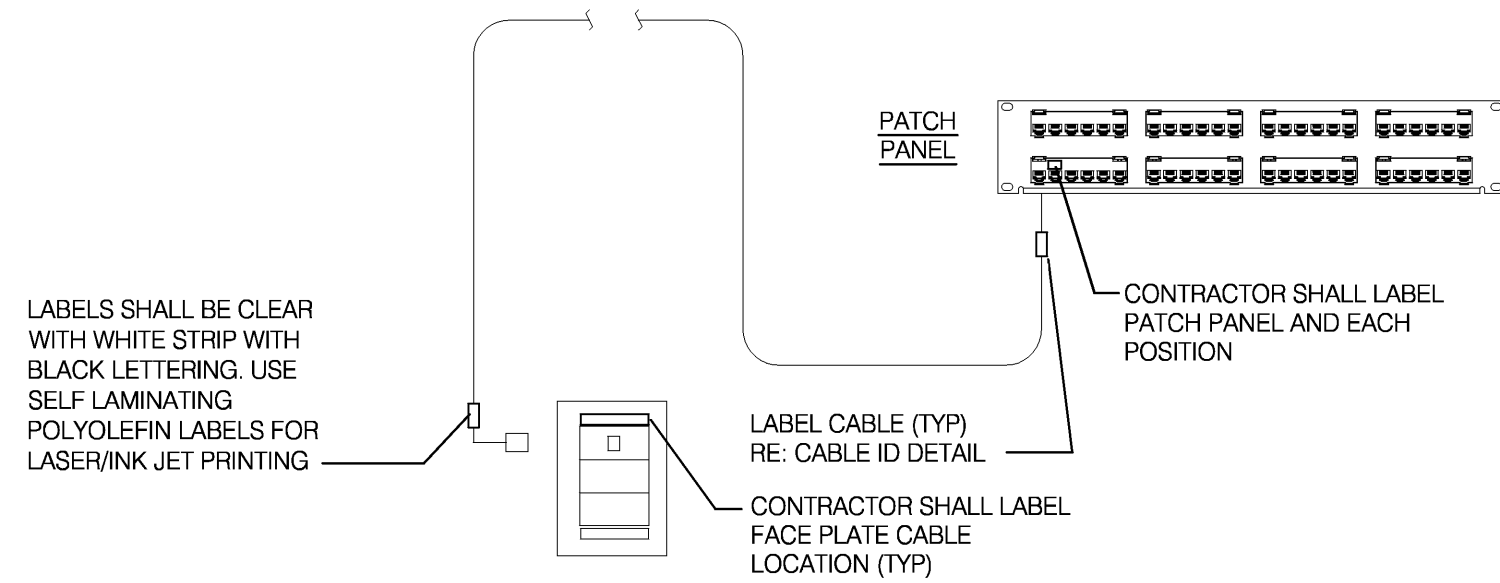
UTP CABLING

1 CABLE IDENTIFICATION DETAIL NO SCALE



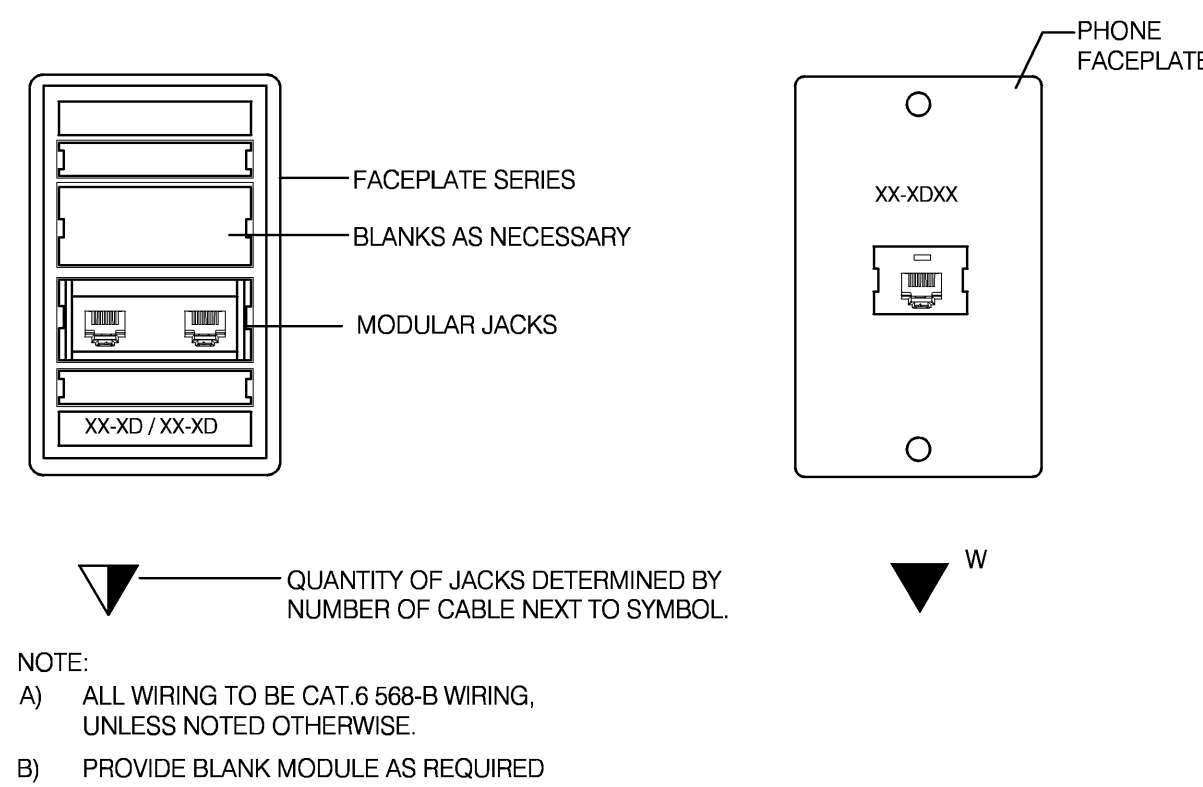
3 TYPICAL WALL DEVICE INSTALLATION DETAIL NO SCALE

3 TYPICAL CABLE LABEL LOCATON DETAIL NO SCALE



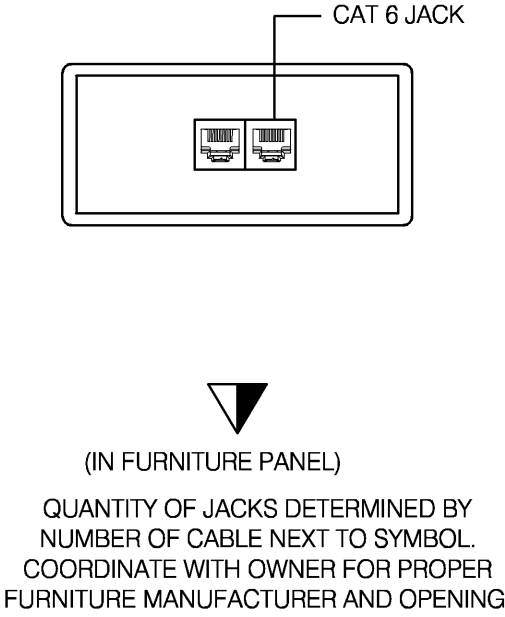
2 CONCRETE WALL FIRE STOPPING DETAIL NO SCALE

4 TELECOMMUNICATIONS OUTLET DETAIL NO SCALE

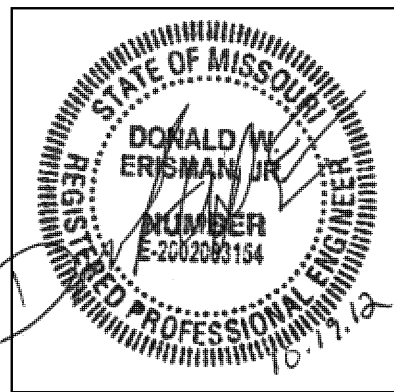


- NOTE:
A) ALL WIRING TO BE CAT.6 568-B WIRING, UNLESS NOTED OTHERWISE.
B) PROVIDE BLANK MODULE AS REQUIRED

5 MISC OUTLET DETAIL NO SCALE



(IN FURNITURE PANEL)
QUANTITY OF JACKS DETERMINED BY NUMBER OF CABLE NEXT TO SYMBOL. COORDINATE WITH OWNER FOR PROPER FURNITURE MANUFACTURER AND OPENING.



MECH / PLUMB / ELECTRICAL ENGINEER:
LANKFORD + associates
1730 WALNUT STREET
KANSAS CITY, MISSOURI 64108
TEL: (816) 221-1411
FAX: (816) 221-1429

HISTORIC TRUMAN COURTHOUSE
INTERIOR RENOVATION
102 NORTH MAIN STREET, INDEPENDENCE, MISSOURI 64050

ISSUED FOR CONSTRUCTION

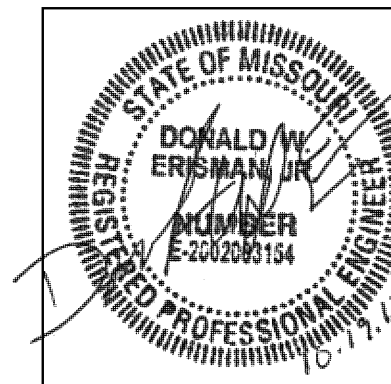
PROJECT NO.	
DATE	10-19-2012
DRAWN BY	JD/SMP
CHECKED BY	DWE
CHECKED BY	LDR
REVISED DATE	DESCRIPTION
SHEET TITLE & NUMBER	

TECHNOLOGY DETAILS
COPYRIGHT © 2012
PIPER-WIND ARCHITECTS, INC.



T-200

DWG FILE: P:\0000\0408_Jackson County Historic Court House\Drawings\0408T200_T201.dwg USER: BlairD PLOT DATE/TIME: 10/19/2012 2:03pm



MECH / PLUMB / ELECTRICAL ENGINEER:

LANKFORD + associates
 1730 WALNUT STREET
 KANSAS CITY, MISSOURI 64108
 TEL. (816) 221-1411
 FAX. (816) 221-1429

HISTORIC TRUMAN COURTHOUSE
 INTERIOR RENOVATION
 102 NORTH MAIN STREET, INDEPENDENCE, MISSOURI 64050

ISSUED FOR CONSTRUCTION

PROJECT NO.	10-19-2012
DATE	10-19-2012
DRAWN BY	JD/SMP
CHECKED BY	DWE
CHECKED BY	LDR
REVISED DATE	DESCRIPTION
SHEET TITLE & NUMBER	

TECHNOLOGY DETAILS
 COPYRIGHT © 2012
 PIPER-WIND ARCHITECTS, INC.

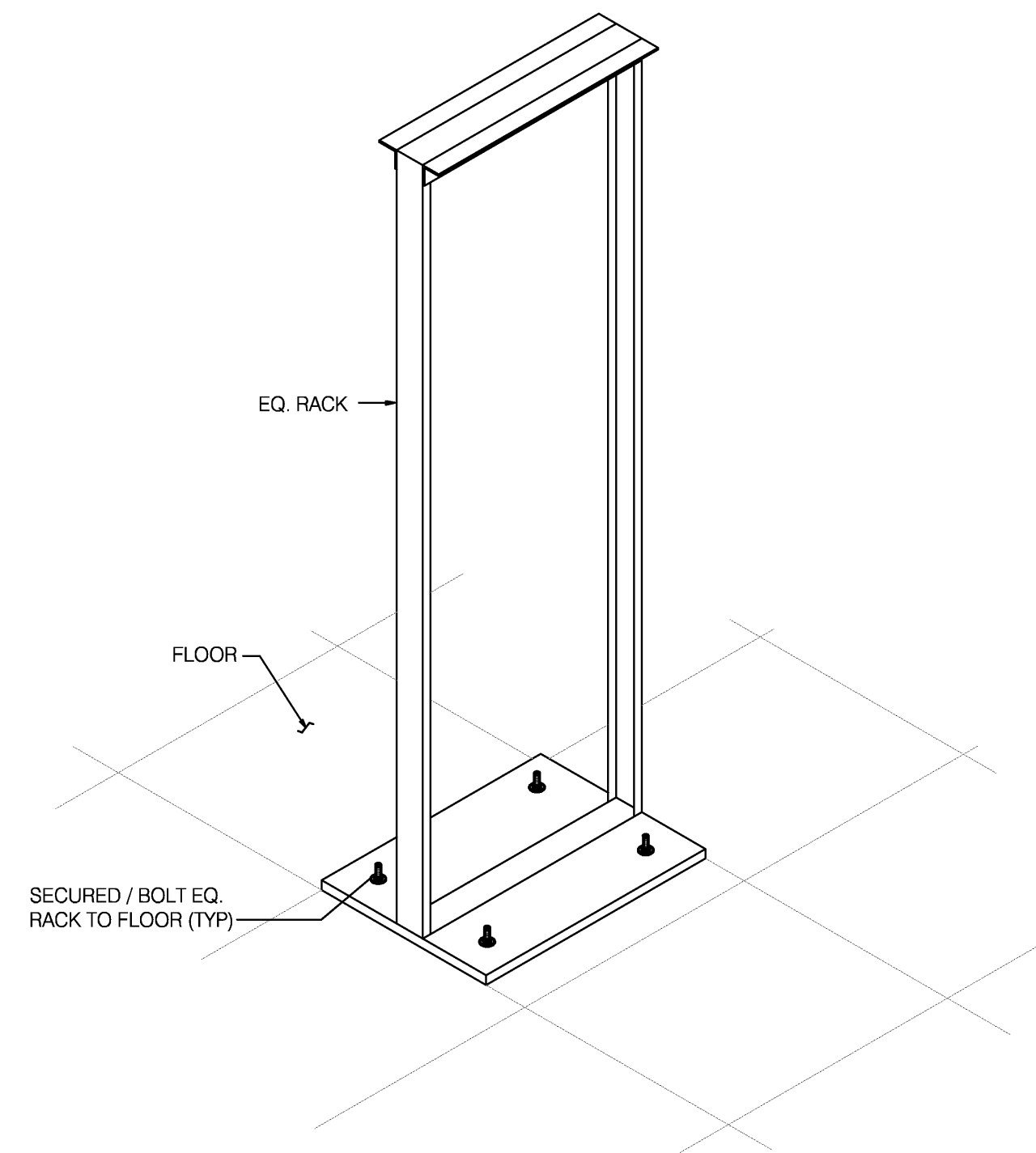
T-201

GENERAL NOTES (TYPICAL ALL SHEETS)

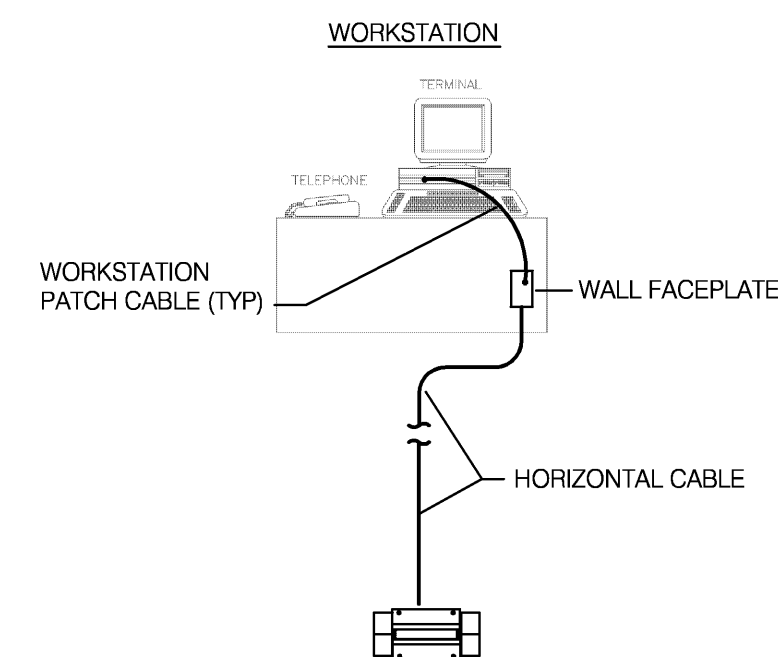
- A) CONDUIT ROUTING IS SHOWN FOR REFERENCE ONLY AND MAY NOT SHOW EXACT ROUTING TAKEN. CONTRACTOR SHALL COORDINATE WITH ELECTRICAL CONTRACTOR FOR ALL CONDUIT INSTALLED FOR TELECOMMUNICATIONS USAGE, UNLESS OTHERWISE NOTED.
- B) ALL LOCATION ARE ROUGHED IN BY OTHERS. TECHNOLOGY CONTRACTOR SHALL PROVIDE AND INSTALL ALL FACE PLATES, MODULAR JACKS, CABLES, CABLE SUPPORTS, LABELS FOR CABLES AND ANY OTHER ITEMS NOTED ON DRAWINGS THAT IS NOT BEING PROVIDED BY OR INSTALLED BY OTHERS.
- C) PROVIDE FIRE STOP ON ALL PIPING AT WALL AND FLOOR PENETRATIONS PER LOCAL CODE REQUIREMENTS. METHOD OF FIRE STOP SHALL MEET WALL/FLOOR RATING. RE: ARCHITECTURAL DRAWINGS FOR LOCATION OF FIRE RATED WALLS.
- D) PROVIDE BONDING JUMPERS BETWEEN ALL CABINET/RACK AND SECTIONS OF CABLE TRAY UNLESS SYSTEM IS UL LISTED AND APPROVED AS A COMPLETE GROUNDED SYSTEM.
- E) CONTRACTOR TO FIELD VERIFY ALL MEASUREMENTS PRIOR TO INSTALLATION.
- F) PROVIDE LABELING FOR ALL GROUND WIRE AT EVERY TERMINATION POINT AND LABEL GROUND BAR.
- G) CABLES SHALL BE BUNDLED WITH LIKE COLOR AND SHALL BE SECURED AND TIED IN A NEAT AND ORDERLY MANNER.
- H) CONTRACTOR SHALL REFERENCE ARCHITECTURAL DRAWINGS FOR WALLS THAT ARE CONSTRUCTED FROM FLOOR TO STRUCTURE. CONTRACTOR SHALL MINIMIZE HOLE PENETRATION AND CONSOLIDATE CABLES INTO ONE PENETRATION. AFTER INSTALLATION CONTRACTOR SHALL SEAL HOLE AIR TIGHT.

TECHNOLOGY SYMBOLS

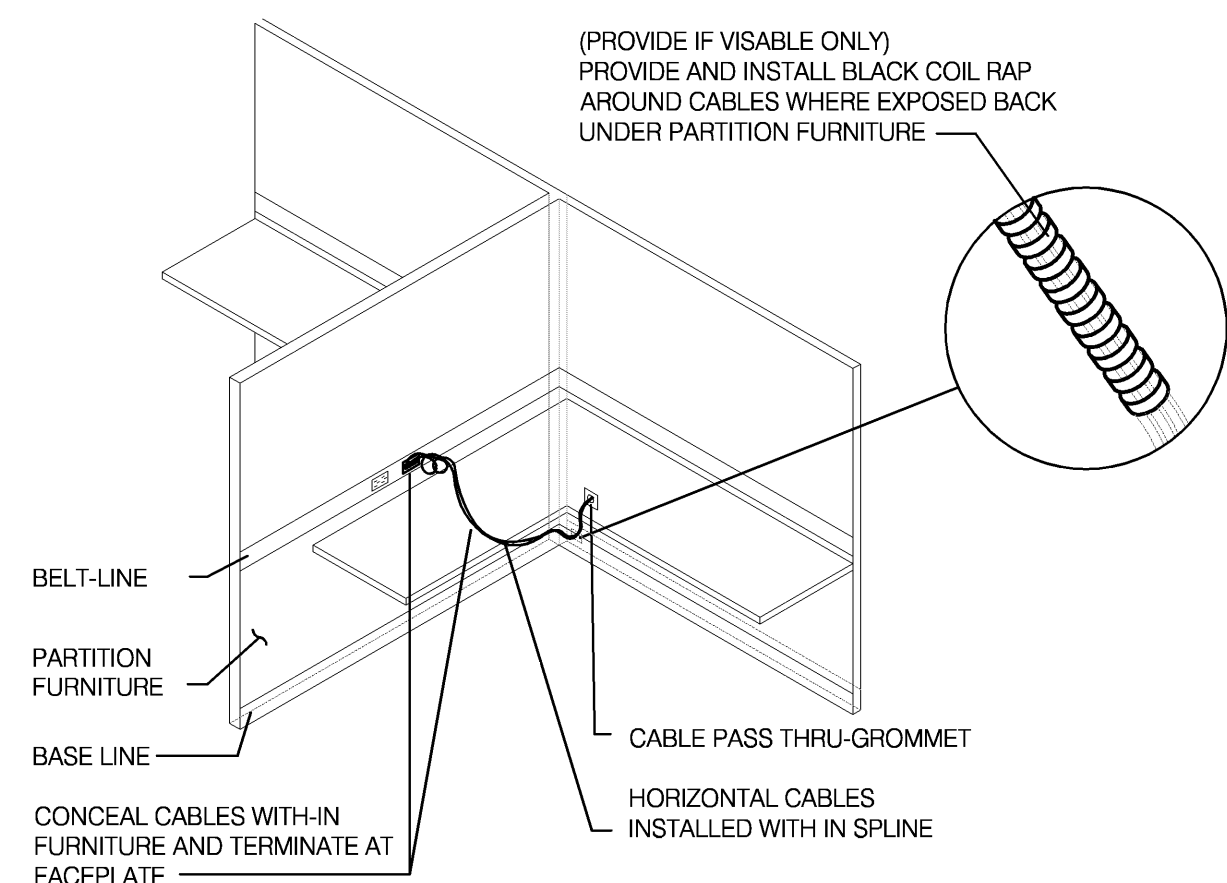
- CABLE TRAY
 - HORIZONTAL CABLE RUN ABOVE LAY-IN CEILING, OR AS NOTED
 - CABLE/CONDUIT UP
 - CABLE/CONDUIT DOWN
 - TELECOMMUNICATIONS OUTLET, NUMBER OF CABLES AS NOTED ON PLANS (1" C, BY OTHERS)
 - PARTITION TELECOMMUNICATIONS OUTLET, NUMBER OF CABLES AS NOTED ON PLANS
 - WALL MOUNTED TELECOMMUNICATIONS OUTLET, (1) CABLES, UNLESS NOTED OTHERWISE (1" C, BY OTHERS)
 - PARTITION FURNITURE DATA FEED, WALL MOUNTED DOUBLE GANG J-BOX WITH DOUBLE GANG PLASTER RING. INSTALLED WITH (2) 1-1/4" C. STUBBED UP OUT OF BOX TO ABOVE ACCESSIBLE CEILING BY OTHERS.
 - COAX CABLE TO CATV JUNCTION BOX WITH 3/4" CONDUIT STUBBED UP OUT OF BOX TO ABOVE ACCESSIBLE CEILING BY OTHERS.
 - WIRELESS ACCESS POINT, EQUIPMENT BY OWNER INSTALL (1) UTP CABLE WITH 10'-0" OF SLACK COILED ABOVE CEILING FOR FUTURE CONNECTION.
 - FLOOR BOX / POKE-THRU WITH CONDUIT PATHWAY PROVIDED BY OTHERS
 - TV - DENOTE, PROVIDE CABLE AS INDICATED, INCLUDED UNDER SINGLE FACEPLATE
 - ELECTRICAL CONTRACTOR (WORK DONE BY)
 - TECHNOLOGY CONTRACTOR (WORK DONE BY)
- CABLE AND FACEPLATE ID SEQUENCE
- FLOOR PATCH PANEL ID
 - POSITION/PORT # ON PATCH PANEL
- XX-A24
- A - V = PATCH PANEL ID, UTP CABLING
 - W = PATCH PANEL ID, UTP CABLING WIRELESS EQ.
 - X = COAX CABLING ID



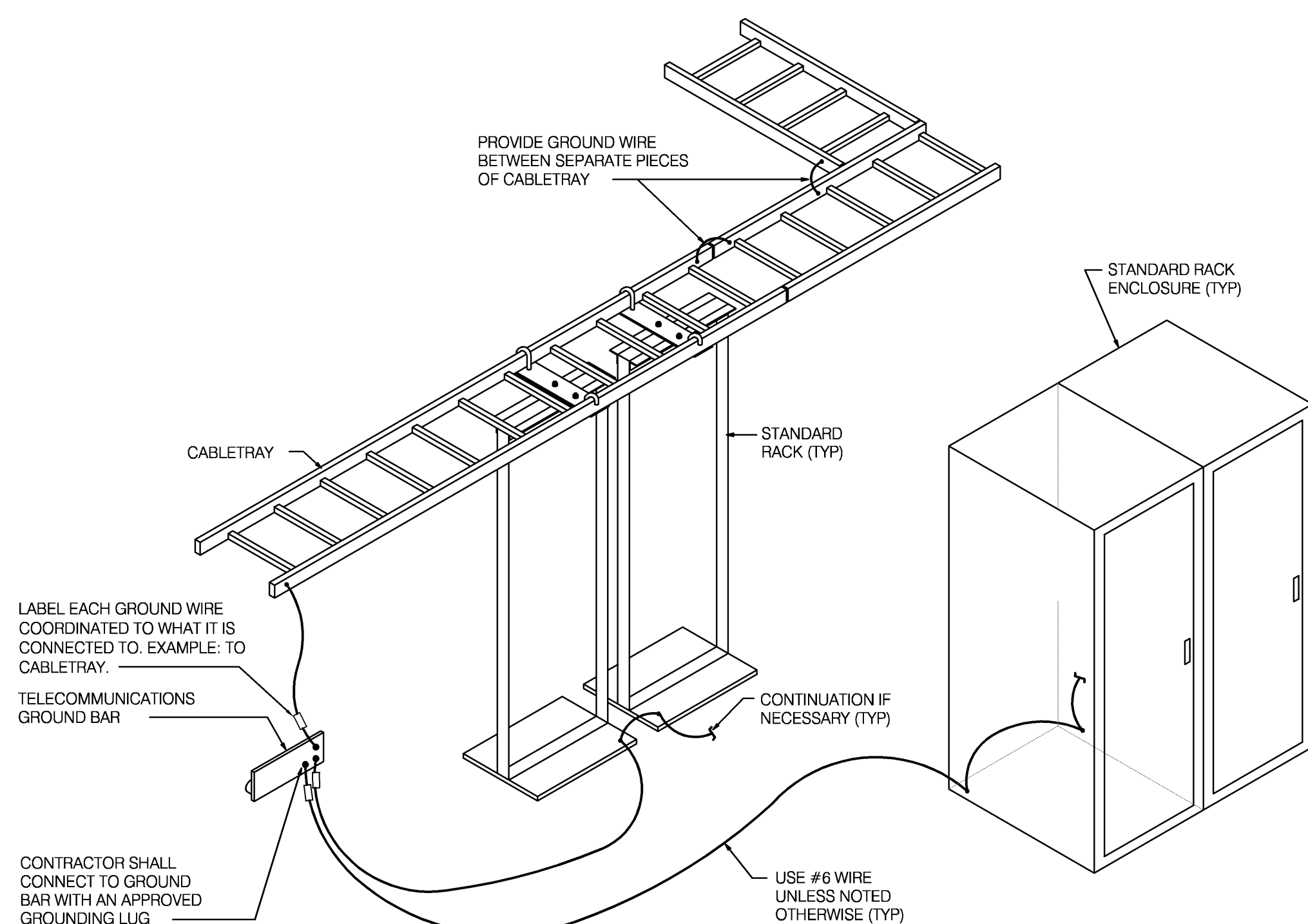
3 TYPICAL FLOOR MOUNTED RACK DETAIL
 NO SCALE



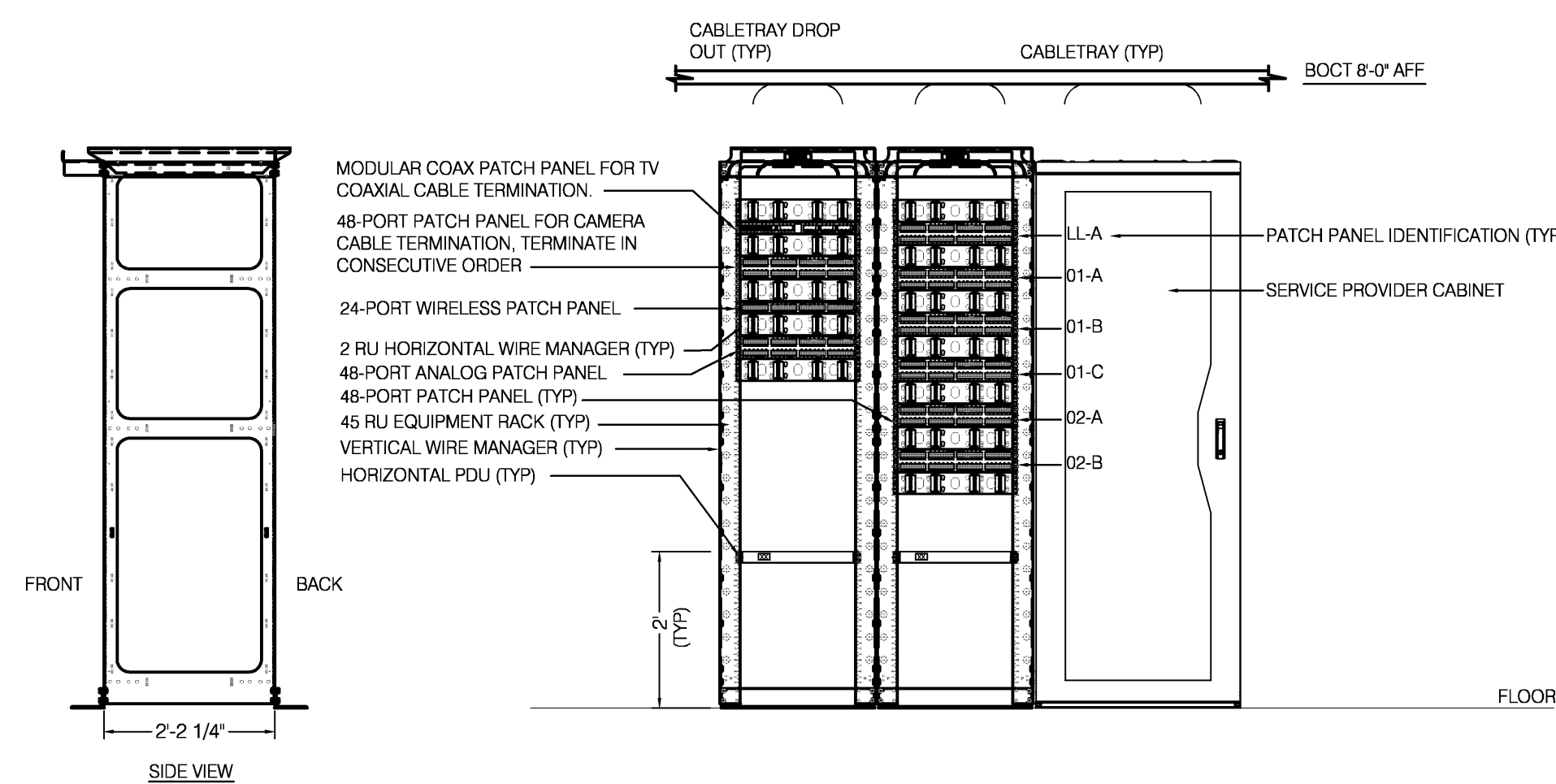
2 HORIZONTAL CABLE CABLE TOPOLOGY DIAGRAM
 NO SCALE



1 PARTITION FURNITURE BASE CABLE FEED DIAGRAM
 NO SCALE



4 TYPICAL EQUIPMENT GROUNDING DETAIL
 NO SCALE



RACK ELEVATION
 NOT TO SCALE

DWG FILE: P:\40200\0408_Jackson County Historic Court House\Drawings\4048\T201.dwg USER: BlairD PLOT DATE/TIME: 10/19/2012 2:03pm



1730 Walnut Street
 Kansas City, Missouri 64108
 Phone: 816.221.1411 / Fax: 816.221.1429
 1915 Frederick Avenue
 St. Joseph, Missouri 64501
 Phone: 816.221.1411 / Fax: 816.221.1429
 Copyright © 2012 LANKFORD + ASSOCIATES, INC.
 L-a Project No. 4048