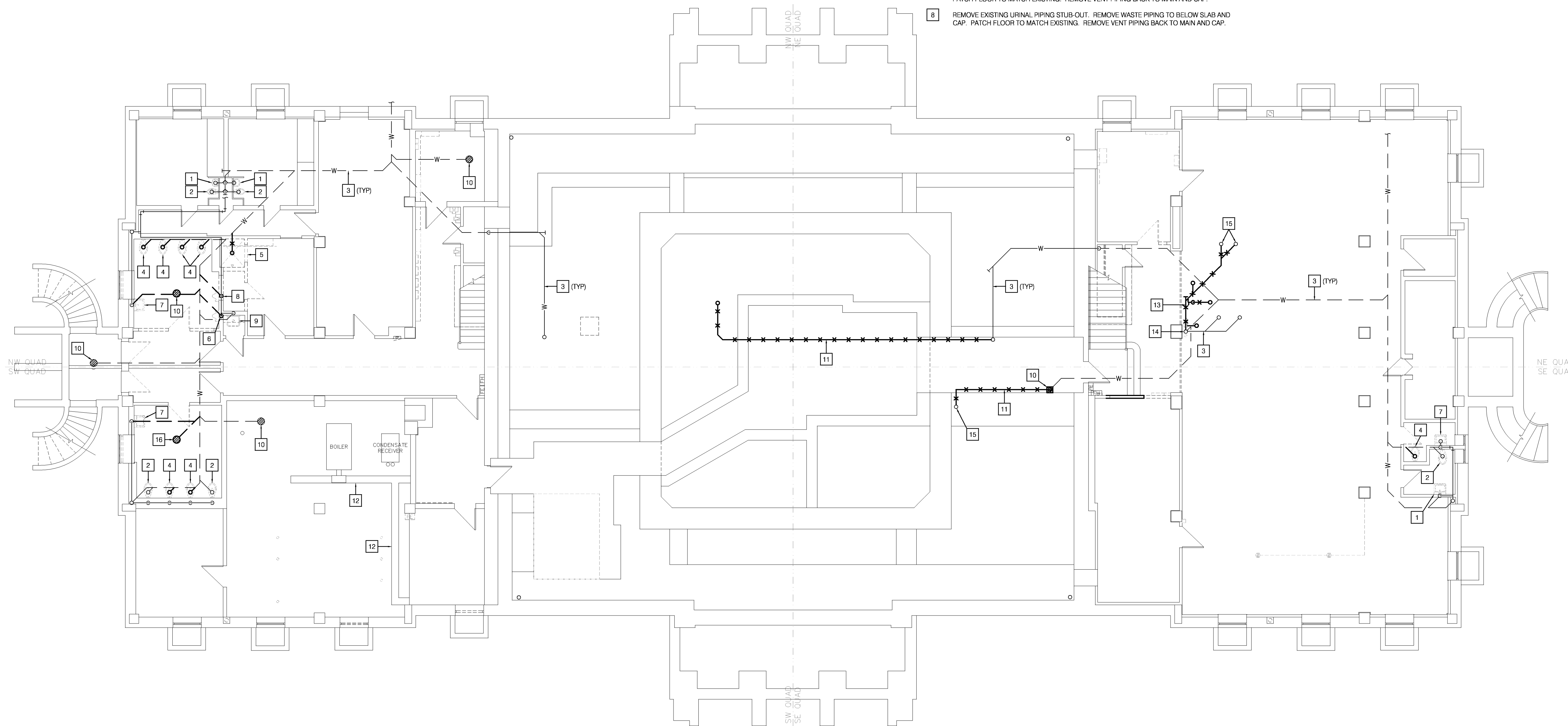


MECH / PLUMB / ELECTRICAL ENGINEER:

LANKFORD + associates
 1730 WALNUT STREET
 KANSAS CITY, MISSOURI 64108
 TEL. (816) 221-1411
 FAX. (816) 221-1429

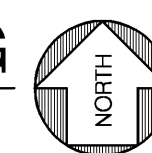
FLOOR PLAN NOTES

- 1 REMOVE EXISTING LAVATORY. CLEAN AND STORE PER OWNERS DIRECTION. CAP EXISTING PIPING WITH-IN CHASE.
- 2 REMOVE EXISTING WATER CLOSET. CLEAN AND STORE PER OWNERS DIRECTION. CAP EXISTING PIPING WITH-IN CHASE.
- 3 EXISTING WASTE PIPING TO REMAIN.
- 4 REMOVE EXISTING WATER CLOSET TO BE RELOCATED. CLEAN, STORE AND REFURBISH TO ORIGINAL CONDITION FOR NEW WORK. REMOVE WASTE PIPING TO BELOW SLAB AND CAP. PATCH FLOOR TO MATCH EXISTING. REMOVE VENT PIPING BACK TO MAIN AND CAP.
- 5 REMOVE EXISTING SHOWER AND ALL ASSOCIATED ACCESSORIES. REMOVE COLD WATER AND HOT WATER PIPING COMPLETELY. REMOVE VENT PIPING BACK TO MAIN AND CAP. REMOVE WASTE PIPING TO BELOW SLAB AND CAP. PATCH FLOOR TO MATCH EXISTING.
- 6 REMOVE EXISTING URINAL. REMOVE WASTE PIPING TO BELOW SLAB AND CAP. PATCH FLOOR TO MATCH EXISTING. REMOVE VENT PIPING BACK TO MAIN AND CAP.
- 7 REMOVE EXISTING LAVATORY TO BE RELOCATED. CLEAN, STORE AND REFURBISH TO ORIGINAL CONDITION FOR NEW WORK. REMOVE WASTE PIPING TO BELOW SLAB AND CAP. PATCH FLOOR TO MATCH EXISTING. REMOVE VENT PIPING BACK TO MAIN AND CAP.
- 8 REMOVE EXISTING URINAL PIPING STUB-OUT. REMOVE WASTE PIPING TO BELOW SLAB AND CAP. PATCH FLOOR TO MATCH EXISTING. REMOVE VENT PIPING BACK TO MAIN AND CAP.
- 9 REMOVE EXISTING WALL MOUNTED MOP SINK. CLEAN, STORE AND REFURBISH TO ORIGINAL CONDITION FOR RECONNECTION UNDER NEW WORK.
- 10 EXISTING FLOOR DRAIN. CLEAN AND VERIFY EXISTING FLOOR DRAIN IN IS PROPER WORKING ORDER.
- 11 REMOVE EXISTING WASTE PIPING AS INDICATED.
- 12 CLEAN, SCOPE DRAIN AND VERIFY EXISTING TRENCH DRAIN PROPER WORKING ORDER. REPAIR ANY DAMAGED SECTIONS OF WASTE PIPING AS NEEDED.
- 13 REMOVE ALL EXISTING EXPOSED WASTE PIPING BELOW CEILING TO STUB-UP LOCATION.
- 14 EXISTING WASTE STACK TO REMAIN. REMOVE EXISTING 4" AND 2" W TIE-IN ADJACENT TO EXISTING STACK.
- 15 EXISTING WASTE STUB-UP TO REMAIN.
- 16 REMOVE EXISTING FLOOR DRAIN. CAP PIPING BELOW SLAB. PATCH FLOOR TO MATCH EXISTING.



LOWER LEVEL DEMOLITION FLOOR PLAN-PLUMBING

SCALE: 1/8" = 1'-0"



Lankford + associates
 Consulting Engineers, Inc.
 1730 Walnut Street
 Kansas City, Missouri 64108
 Phone: 816.221.1411 | Fax: 816.221.1429
 Copyright © 2012 LANKFORD + ASSOCIATES, INC.
 L-44 Project No. 4048

HISTORIC TRUMAN COURTHOUSE

INTERIOR RENOVATION

102 NORTH MAIN STREET, INDEPENDENCE, MISSOURI 64050

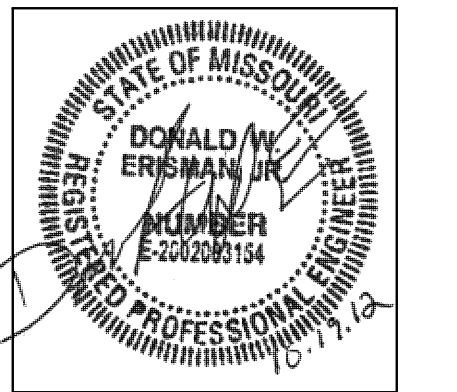
ISSUED FOR CONSTRUCTION

PROJECT NO.	DATE	DRAWN BY	CHECKED BY	REVISOR	DESCRIPTION
10-19-2012	JDB/SMP	DWE	LDR		

LOWER LEVEL DEMO FLOOR PLAN PLUMBING

COPYRIGHT © 2012 PIPER-WIND ARCHITECTS, INC.

PD-100

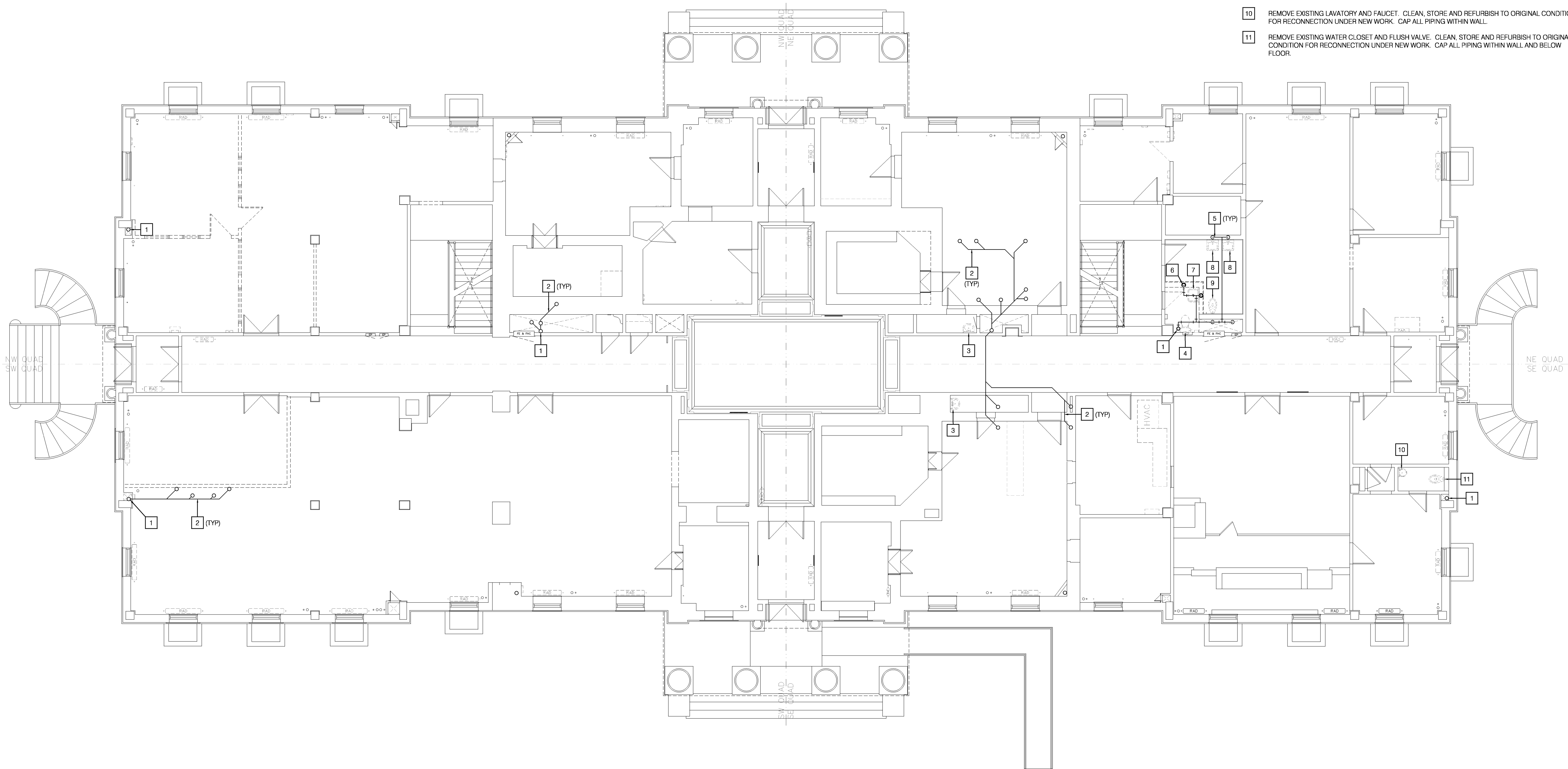


MECH / PLUMB / ELECTRICAL ENGINEER:

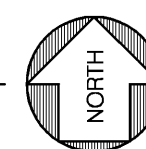
LANKFORD + associates
 1730 WALNUT STREET
 KANSAS CITY, MISSOURI 64108
 TEL. (816) 221-1411
 FAX. (816) 221-1429

FLOOR PLAN NOTES

- 1 EXISTING COMBINATION WASTE AND VENT STACK TO REMAIN.
- 2 EXISTING WASTE PIPING IN CEILING TO REMAIN.
- 3 REMOVE EXISTING SINK. CLEAN, STORE AND REFURBISH TO ORIGINAL CONDITION FOR RECONNECTION UNDER NEW WORK.
- 4 REMOVE EXISTING WATER CLOSET. REMOVE WASTE PIPING TO BELOW FLOOR.
- 5 EXISTING VENT PIPING TO REMAIN.
- 6 REMOVE EXISTING VENT AND WASTE PIPING IN WALL. REMOVE WASTE PIPING TO FLOOR BELOW AND REMOVE VENT PIPING TO ABOVE CEILING.
- 7 REMOVE EXISTING WALL MOUNTED MOP SINK. CLEAN, STORE AND REFURBISH TO ORIGINAL CONDITION FOR RECONNECTION UNDER NEW WORK.
- 8 REMOVE EXISTING LAVATORY AND FAUCET. CLEAN, STORE AND REFURBISH TO ORIGINAL CONDITION FOR RECONNECTION UNDER NEW WORK.
- 9 REMOVE EXISTING WATER CLOSET AND FLUSH VALVE. CLEAN, STORE AND REFURBISH TO ORIGINAL CONDITION FOR RECONNECTION UNDER NEW WORK.
- 10 REMOVE EXISTING LAVATORY AND FAUCET. CLEAN, STORE AND REFURBISH TO ORIGINAL CONDITION FOR RECONNECTION UNDER NEW WORK. CAP ALL PIPING WITHIN WALL.
- 11 REMOVE EXISTING WATER CLOSET AND FLUSH VALVE. CLEAN, STORE AND REFURBISH TO ORIGINAL CONDITION FOR RECONNECTION UNDER NEW WORK. CAP ALL PIPING WITHIN WALL AND BELOW FLOOR.



FIRST FLOOR DEMOLITION PLAN-PLUMBING
 SCALE: 1/8" = 1'-0"



HISTORIC TRUMAN COURTHOUSE

INTERIOR RENOVATION

102 NORTH MAIN STREET, INDEPENDENCE, MISSOURI 64050

ISSUED FOR
 CONSTRUCTION

PROJECT NO.	
DATE	10-19-2012
DRAWN BY	JDB/SMP
CHECKED BY	DWE
CHECKED BY	LDR
REVISED DATE	DESCRIPTION

SHEET TITLE & NUMBER

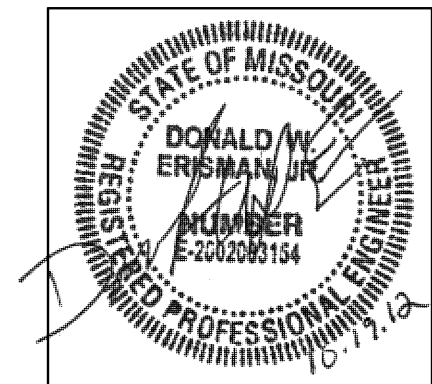
FIRST FLOOR DEMO
 PLAN PLUMBING

COPYRIGHT © 2012
 PIPER-WIND ARCHITECTS, INC.



PD-101

DWG FILE: P:\4020\048_Jackson County\Historic Court House\Drawings\4048PD101.dwg USER: JobB_PLOT DATE/TIME: 10/18/2012 2:38pm



MECH / PLUMB / ELECTRICAL ENGINEER:

LANKFORD + associates
 1730 WALNUT STREET
 KANSAS CITY, MISSOURI 64108
 TEL. (816) 221-1411
 FAX. (816) 221-1429

FLOOR PLAN NOTES

- 1 EXISTING COMBINATION WASTE AND VENT STACK TO REMAIN.
- 2 EXISTING VENT THRU ROOF TO REMAIN.
- 3 EXISTING ROOF DRAIN TO REMAIN.
- 4 REMOVE EXISTING STORM DRAIN PIPING AS INDICATED.
- 5 EXISTING VENT PIPING ABOVE CEILING TO REMAIN.
- 6 REMOVE EXISTING LAVATORY. CLEAN, STORE AND REFURBISH TO ORIGINAL CONDITION FOR RECONNECTION UNDER NEW WORK.
- 7 REMOVE EXISTING WATER CLOSET. CLEAN, STORE AND REFURBISH TO ORIGINAL CONDITION FOR RECONNECTION UNDER NEW WORK.
- 8 REMOVE EXISTING WALL MOUNTED MOP SINK. CLEAN, STORE AND REFURBISH TO ORIGINAL CONDITION FOR RECONNECTION UNDER NEW WORK.
- 9 REMOVE EXISTING DRINKING FOUNTAIN. PREPARE EXISTING WASTE PIPING FOR RECONNECTION UNDER NEW WORK.
- 10 REMOVE EXISTING DRINKING FOUNTAIN. CAP WASTE PIPING WITHIN WALL.

HISTORIC TRUMAN COURTHOUSE

INTERIOR RENOVATION

102 NORTH MAIN STREET, INDEPENDENCE, MISSOURI 64050

ISSUED FOR CONSTRUCTION

PROJECT NO.	10-19-2012
DATE	JDB/SMP
DRAWN BY	DWE
CHECKED BY	LDR
REVISIONS	

NO.	DATE	DESCRIPTION

SHEET TITLE & NUMBER

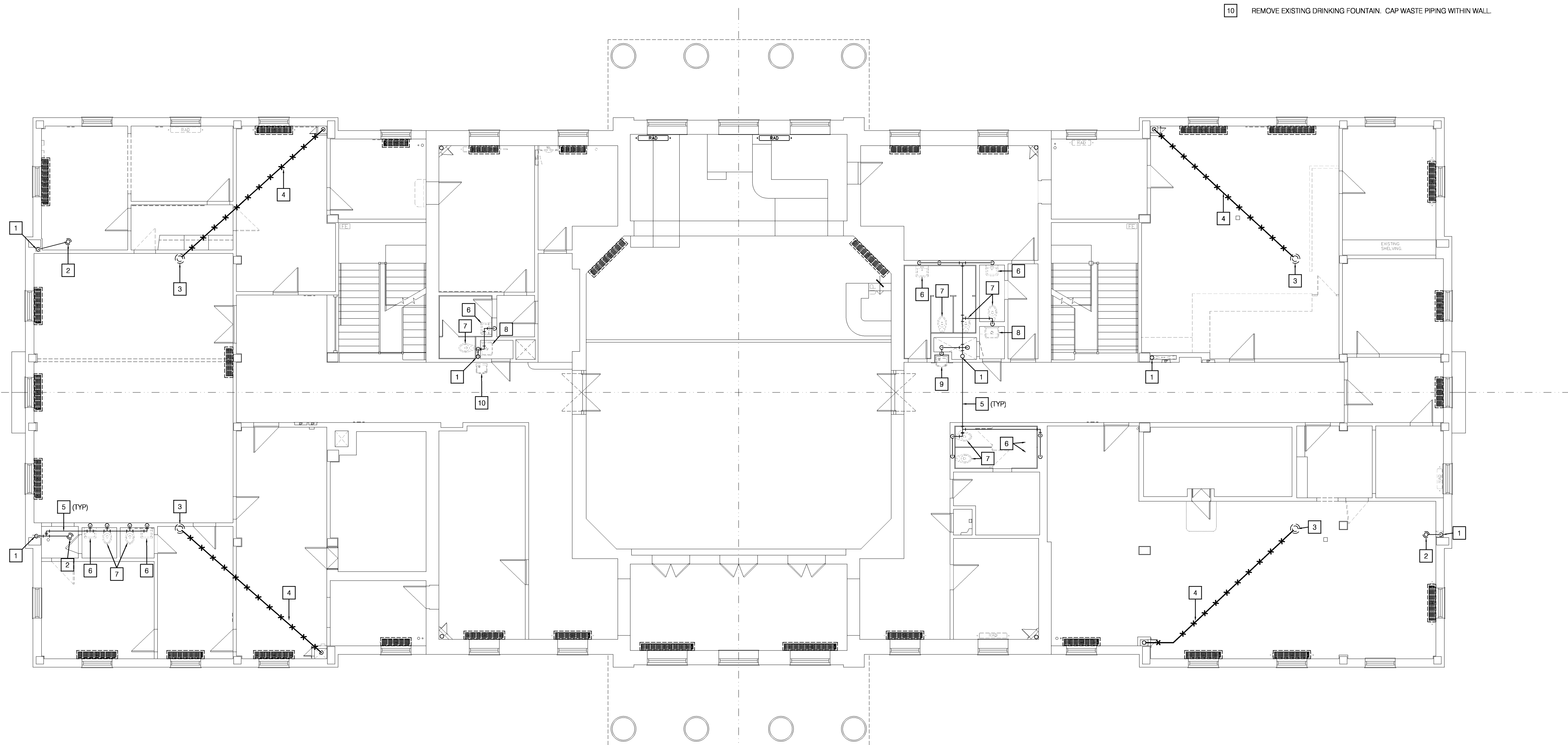
SECOND FLOOR DEMO
 PLAN PLUMBING

COPYRIGHT © 2012
 PIPER-WIND ARCHITECTS, INC.



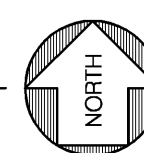
Lankford + associates
 Consulting Engineers, Inc.
 1730 Walnut Street
 Kansas City, Missouri 64108
 Phone: 816.221.1411 | Fax: 816.221.1429
 Copyright © 2012 Lankford + Associates, Inc.
 L-44 Project No. 4048

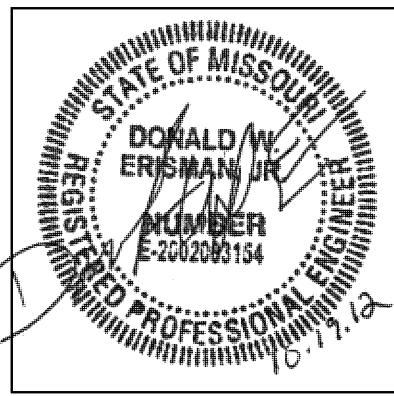
PD-102



SECOND FLOOR DEMOLITION PLAN-PLUMBING

SCALE: 1/8"=1'-0"



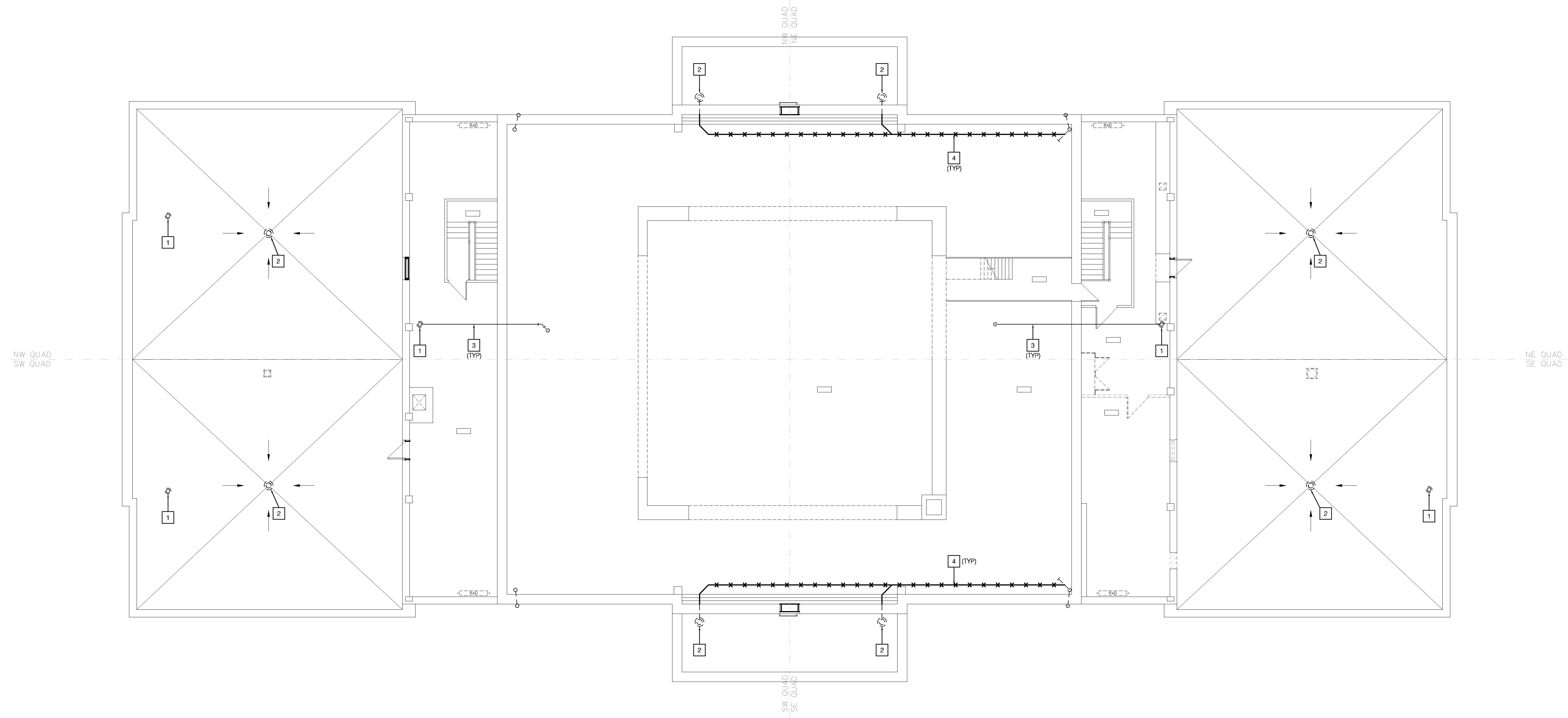


MECH / PLUMB / ELECTRICAL ENGINEER:

LANKFORD + associates
 1730 WALNUT STREET
 KANSAS CITY, MISSOURI 64108
 TEL. (816) 221-1411
 FAX. (816) 221-1429

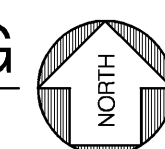
FLOOR PLAN NOTES

- 1 EXISTING VENT THRU ROOF TO REMAIN.
- 2 EXISTING STORM DRAIN TO REMAIN.
- 3 EXISTING VENT PIPING TO REMAIN.
- 4 REMOVE EXISTING STORM PIPING AS INDICATED.



ATTIC/ROOF DEMOLITION PLAN-PLUMBING

SCALE: 1/8"=1'-0"



Lankford + associates
 Consulting Engineers, Inc.
 1730 Walnut Street
 Kansas City, Missouri 64108
 Phone: 816.221.1411 / Fax: 816.221.1429
 Copyright © 2012 LANKFORD + ASSOCIATES, INC.
 License Project No. 4048

HISTORIC TRUMAN COURTHOUSE

INTERIOR RENOVATION

102 NORTH MAIN STREET, INDEPENDENCE, MISSOURI 64050

ISSUED FOR CONSTRUCTION

PROJECT NO.	DATE
10-19-2012	10-19-2012
DRAWN BY	IDB/SMP
CHECKED BY	DWE
CHECKED BY	LDR
REVISED DATE	DESCRIPTION

SHEET TITLE & NUMBER

ATTIC/ROOF DEMO PLAN PLUMBING
 COPYRIGHT © 2012
 PIPER-WIND ARCHITECTS, INC.

PD-103

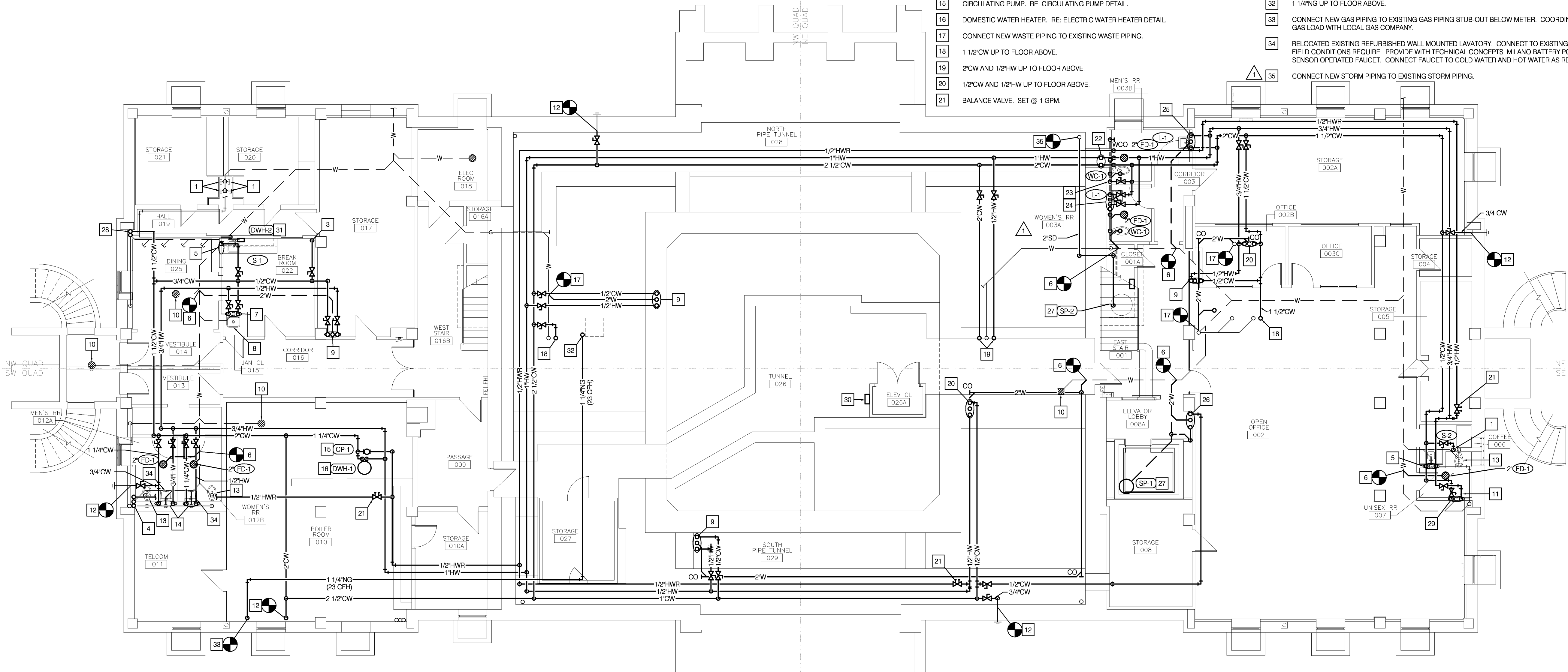
DWG FILE: P:\0020\048_Jackson County Historic Court House\Drawings\048\PD103.dwg USER: Jobb PLOT DATE/TIME: 10/18/2012 2:38pm

GENERAL NOTE

- A. UTILIZE EXISTING PATHWAYS OF REMOVED PIPE WHEREVER POSSIBLE.
- B. PROVIDE ALL RELOCATED LAVATORIES WITH NEW TRAPS, SUPPLIES AND STOPS.

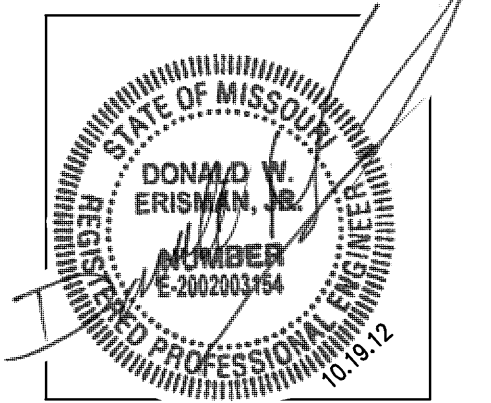
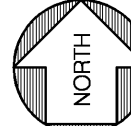
FLOOR PLAN NOTES

- 1 CAP EXISTING PIPING WITHIN CHASE.
- 2 ELEVATOR SUMP PUMP ALARM PANEL. COORDINATE WITH ELECTRICAL CONTRACTOR.
- 3 1/2" CW DOWN IN WALL AND ROUTE TO EACH REFRIGERATOR ICE MAKER AND CONNECT PER MANUFACTURER'S RECOMMENDATIONS.
- 4 1 1/2" CW, 1/2" HW, AND 1/2" HWR UP TO FLOOR ABOVE.
- 5 1/2" CW DOWN IN WALL. CONNECT TO SINK AS REQUIRED. PROVIDE 1/2" CW STUB-OUT WITH BACKFLOW PREVENTER AND SHUT-OFF VALVE BELOW COUNTER FOR COFFEE MAKER. ROUTE FROM SHUT-OFF VALVE TO COFFEE MAKER AND CONNECT PER MANUFACTURER'S RECOMMENDATIONS.
- 6 CONNECT NEW WASTE PIPING TO EXISTING WASTE PIPING BELOW SLAB. SAWCUT AND PATCH FLOOR TO MATCH EXISTING.
- 7 1/2" CW AND 1/2" HW DOWN IN WALL. CONNECT TO UTILITY SINK AS REQUIRED.
- 8 RECONNECT EXISTING REFURBISHED UTILITY SINK. CONNECT TO EXISTING WASTE AS FIELD CONDITIONS REQUIRE. PROVIDE WITH NEW CHICAGO 887-CP FAUCET. CONNECT FAUCET TO COLD WATER AND HOT WATER AS REQUIRED.
- 9 1/2" CW, 1/2" HW, AND 2" W UP TO FLOOR ABOVE.
- 10 EXISTING FLOOR DRAIN. PROVIDE WITH NEW GRATE.
- 11 RELOCATED EXISTING REFURBISHED PEDESTAL LAVATORY. CONNECT TO EXISTING WASTE AS FIELD CONDITIONS REQUIRE. PROVIDE WITH TECHNICAL CONCEPTS MILANO BATTERY POWERED SENSOR OPERATED FAUCET. CONNECT FAUCET TO COLD WATER AND HOT WATER AS REQUIRED.
- 12 CONNECT NEW COLD WATER PIPING TO EXISTING COLD WATER PIPING.
- 13 RECONNECT EXISTING REFURBISHED WATER CLOSET. CONNECT TO EXISTING WASTE AS FIELD CONDITIONS REQUIRE. PROVIDE WITH SLOAN G2 OPTIMA BATTERY POWERED SENSOR OPERATED FLUSH VALVE. CONNECT TO COLD WATER PIPING AS REQUIRED.
- 14 1" CW AND 1/2" HW DOWN IN WALL. ROUTE IN WALL TO EACH FIXTURE AND CONNECT AS REQUIRED.
- 15 CIRCULATING PUMP. RE: CIRCULATING PUMP DETAIL.
- 16 DOMESTIC WATER HEATER. RE: ELECTRIC WATER HEATER DETAIL.
- 17 CONNECT NEW WASTE PIPING TO EXISTING WASTE PIPING.
- 18 1 1/2" CW UP TO FLOOR ABOVE.
- 19 2" CW AND 1/2" HW UP TO FLOOR ABOVE.
- 20 1/2" CW AND 1/2" HW UP TO FLOOR ABOVE.
- 21 BALANCE VALVE. SET @ 1 GPM.
- 22 1" CW AND 1/2" HW UP TO FLOOR ABOVE.
- 23 1 1/4" CW DOWN IN WALL. CONNECT TO FIXTURE AS REQUIRED.
- 24 1" CW AND 1/2" HW DOWN IN WALL. ROUTE TO EACH FIXTURE AND CONNECT AS REQUIRED. 4" W DOWN FROM FLOOR ABOVE.
- 25 1/2" CW AND 1/2" HW DOWN IN WALL. CONNECT TO FIXTURE AS REQUIRED. 4" W DOWN FROM FLOOR ABOVE. COORDINATE LOCATION WITH BEAM.
- 26 1/2" CW, 2" V AND 2" W UP TO FLOOR ABOVE.
- 27 SUMP PUMP. RE: SUMP PUMP DETAIL.
- 28 1/2" CW UP TO FLOOR ABOVE.
- 29 1/2" CW AND 1/2" HW DOWN IN WALL. CONNECT TO FIXTURE AS REQUIRED.
- 30 ELEVATOR SUMP PUMP HIGH WATER ALARM PANEL. COORDINATE WITH ELECTRICAL CONTRACTOR.
- 31 DOMESTIC WATER HEATER. RE: TANKLESS WATER HEATER DETAIL.
- 32 1 1/4" NG UP TO FLOOR ABOVE.
- 33 CONNECT NEW GAS PIPING TO EXISTING GAS PIPING STUB-OUT BELOW METER. COORDINATE NEW GAS LOAD WITH LOCAL GAS COMPANY.
- 34 RELOCATED EXISTING REFURBISHED WALL MOUNTED LAVATORY. CONNECT TO EXISTING WASTE AS FIELD CONDITIONS REQUIRE. PROVIDE WITH TECHNICAL CONCEPTS MILANO BATTERY POWERED SENSOR OPERATED FAUCET. CONNECT FAUCET TO COLD WATER AND HOT WATER AS REQUIRED.
- 35 CONNECT NEW STORM PIPING TO EXISTING STORM PIPING.



LOWER LEVEL PLAN-PLUMBING

SCALE: 1/8" = 1'-0"



MECH / PLUMB / ELECTRICAL ENGINEER:
LANKFORD + associates
 1730 WALNUT STREET
 KANSAS CITY, MISSOURI 64108
 TEL: (816) 221-1411
 FAX: (816) 221-1429

HISTORIC TRUMAN COURTHOUSE

INTERIOR RENOVATION

102 NORTH MAIN STREET, INDEPENDENCE, MISSOURI 64050

ISSUED FOR CONSTRUCTION

PROJECT NO.	10-19-2012
DATE	JDBSMP
DRAWN BY	DWE
CHECKED BY	LDR
REVISOR	DESCRIPTION
10-26-12	ADDENDUM #1

SHEET TITLE & NUMBER

LOWER LEVEL
 PLAN PLUMBING
 COPYRIGHT © 2012
 PIPER-WIND ARCHITECTS, INC.



Consulting Engineers, Inc.
 1730 Walnut Street
 Kansas City, Missouri 64108
 Phone: 816.221.1411 / Fax: 816.221.1429
 Copyright © 2012 LANKFORD + ASSOCIATES, INC.
 L-4 Project No. 4048

P-100

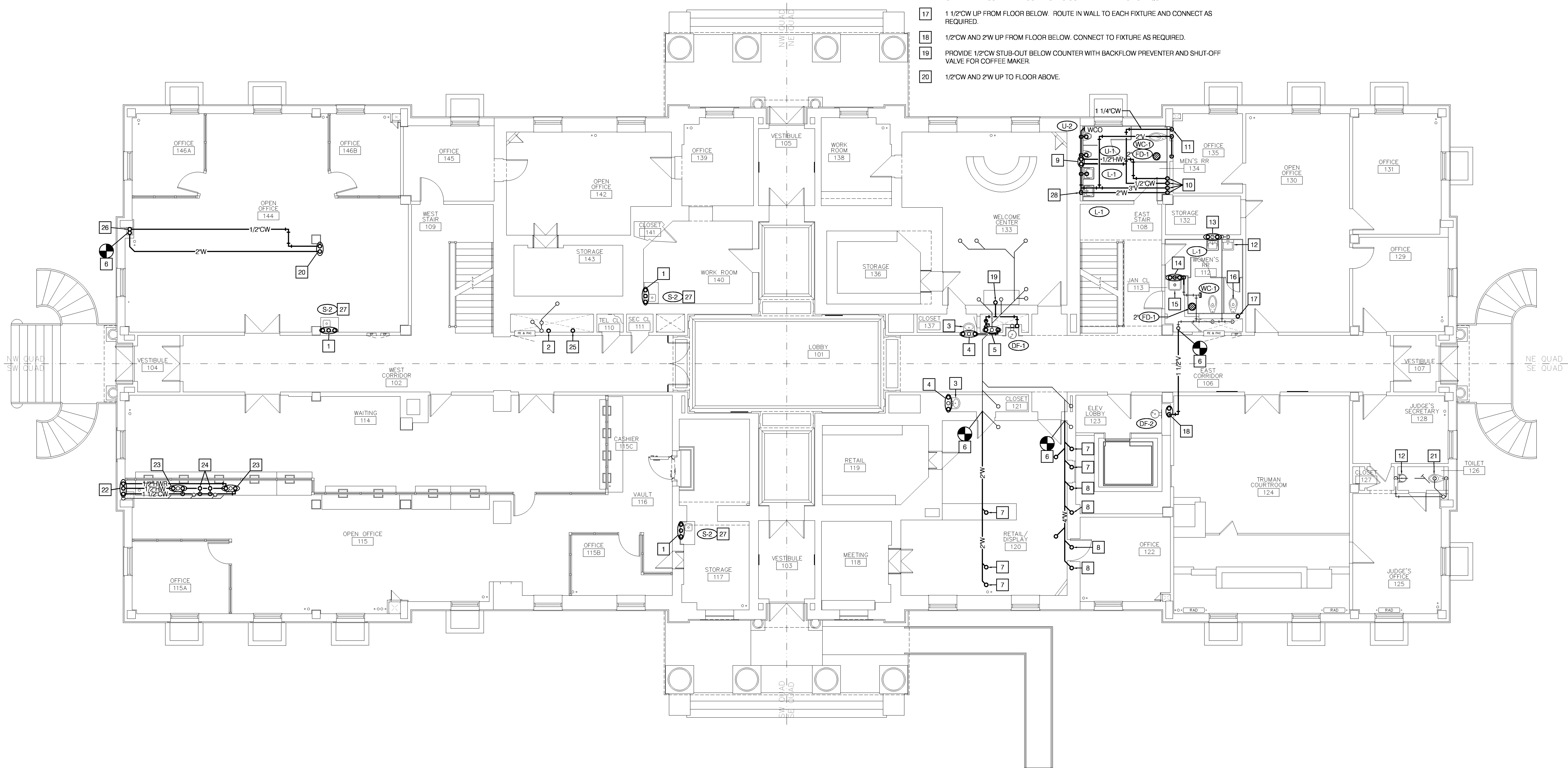
DWG FILE: P:\000\4048_Jackson County Historic Court House\Drawings\4048P100.dwg USER: Jobal PLOT DATE/TIME: 12/7/2012 10:14am

GENERAL NOTE

- A. UTILIZE EXISTING PATHWAYS OF REMOVED PIPE WHEREVER POSSIBLE.
 B. PROVIDE ALL RELOCATED SINK AND LAVATORIES WITH NEW TRAPS, SUPPLIES AND STOPS.

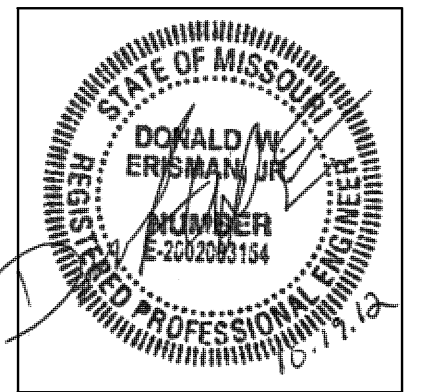
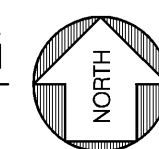
FLOOR PLAN NOTES

- 1 1/2" CW, 1/2" HW AND 2" W UP FROM FLOOR BELOW. CONNECT TO SINK AS REQUIRED. PROVIDE 1/2" CW STUB-OUT AND SHUT-OFF VALVE BELOW COUNTER FOR COFFEE MAKER. ROUTE FROM SHUT-OFF VALVE TO COFFEE MAKER AND CONNECT PER MANUFACTURERS RECOMMENDATIONS.
- 2 1 1/2" CW UP FROM FLOOR BELOW.
- 3 RECONNECT EXISTING REFURBISHED SINK. CONNECT TO EXISTING WASTE AS FIELD CONDITIONS REQUIRE. PROVIDE WITH NEW FAUCET. CONNECT TO COLD WATER AND HOT WATER AS REQUIRED.
- 4 1/2" CW AND 1/2" HW UP FROM FLOOR BELOW. CONNECT TO SINK AS REQUIRED.
- 5 2" CW AND 1/2" HW UP FROM FLOOR BELOW AND 2" CW UP TO FLOOR ABOVE.
- 6 CONNECT NEW WASTE PIPING TO EXISTING WASTE PIPING IN CEILING.
- 7 2" W DOWN FROM FLOOR ABOVE.
- 8 4" W DOWN FROM FLOOR ABOVE.
- 9 1 1/2" CW AND 1/2" HW UP FROM FLOOR BELOW. ROUTE IN WALL TO EACH FIXTURE AND CONNECT AS REQUIRED.
- 10 2" W DOWN FROM FLOOR ABOVE. 1/2" CW, 1/2" HW, AND 3" V UP TO FLOOR ABOVE.
- 11 1 1/4" CW UP DOWN IN WALL. CONNECT TO FIXTURE AS REQUIRED.
- 12 REINSTALL EXISTING REFURBISHED LAVATORY AND FAUCET. DO NOT CONNECT TO WASTE OR WATER PIPING. PROVIDE WITH ACRYLIC COVER.
- 13 1/2" CW AND 1/2" HW UP FROM FLOOR BELOW. ROUTE IN WALL TO EACH FIXTURE AND CONNECT AS REQUIRED.
- 14 1/2" CW AND 1/2" HW UP FROM FLOOR BELOW. CONNECT TO UTILITY SINK AS REQUIRED.
- 15 RECONNECT EXISTING REFURBISHED UTILITY SINK. CONNECT TO EXISTING WASTE AS FIELD CONDITIONS REQUIRE. PROVIDE WITH NEW CHICAGO 897-CP FAUCET. CONNECT FAUCET TO COLD WATER AND HOT WATER AS REQUIRED.
- 16 RECONNECT EXISTING REFURBISHED WATER CLOSET. CONNECT TO EXISTING WASTE AS FIELD CONDITIONS REQUIRE. PROVIDE WITH SLOAN G2 OPTIMA BATTERY POWERED SENSOR OPERATED FLUSH VALVE. CONNECT TO COLD WATER PIPING AS REQUIRED.
- 17 1 1/2" CW UP FROM FLOOR BELOW. ROUTE IN WALL TO EACH FIXTURE AND CONNECT AS REQUIRED.
- 18 1/2" CW AND 2" W UP FROM FLOOR BELOW. CONNECT TO FIXTURE AS REQUIRED.
- 19 PROVIDE 1/2" CW STUB-OUT BELOW COUNTER WITH BACKFLOW PREVENTER AND SHUT-OFF VALVE FOR COFFEE MAKER.
- 20 1/2" CW AND 2" W UP TO FLOOR ABOVE.
- 21 REINSTALL EXISTING REFURBISHED WATER CLOSET AND FLUSH VALVE. DO NOT CONNECT TO WASTE OR WATER PIPING. PROVIDE WITH ACRYLIC COVER.
- 22 1 1/2" CW, 1/2" HW, AND 1/2" HW UP FROM FLOOR BELOW.
- 23 1/2" CW AND 1/2" HW UP TO FLOOR ABOVE.
- 24 1 1/4" CW UP TO FLOOR ABOVE.
- 25 1 1/4" NG UP FROM FLOOR BELOW AND UP TO FLOOR ABOVE.
- 26 1/2" CW UP FROM FLOOR BELOW.
- 27 PROVIDE SINK WITH AIR ADMITTANCE VALVE. PLUMBING CONTRACTOR SHALL FOLLOW ALL INSTRUCTIONS AND DIRECTIONS OF AIR ADMITTANCE VALVE COMPANY. CONTRACTOR SHALL NOT USE ANY SOLVENTS OR PLUMBERS PUTTY ON AIR ADMITTANCE VALVES. RE: AIR ADMITTANCE VALVE DETAIL.
- 28 COMBINATION WASTE AND VENT PIPING UP FROM FLOOR BELOW.



FIRST FLOOR PLAN-PLUMBING

SCALE: 1/8"=1'-0"



MECH / PLUMB / ELECTRICAL ENGINEER:

LANKFORD + associates
 1730 WALNUT STREET
 KANSAS CITY, MISSOURI 64108
 TEL. (816) 221-1411
 FAX. (816) 221-1429

HISTORIC TRUMAN COURTHOUSE

INTERIOR RENOVATION

102 NORTH MAIN STREET, INDEPENDENCE, MISSOURI 64050

ISSUED FOR CONSTRUCTION

PROJECT NO.	10-19-2012
DATE	JDB/SMP
DRAWN BY	DWE
CHECKED BY	LDR
REVISOR	
REVISION	

SHEET TITLE & NUMBER

FIRST FLOOR PLAN
 PLUMBING

COPYRIGHT © 2012
 PIPER-WIND ARCHITECTS, INC.



Consulting Engineers, Inc.
 1730 Walnut Street
 Kansas City, Missouri 64108
 1913 Franklin Avenue
 St. Joseph, Missouri 64501
 Phone: 816.221.1411 / Fax: 816.221.1429
 COPYRIGHT © 2012 LANKFORD + ASSOCIATES, INC.
 L-14 Project No. 4048

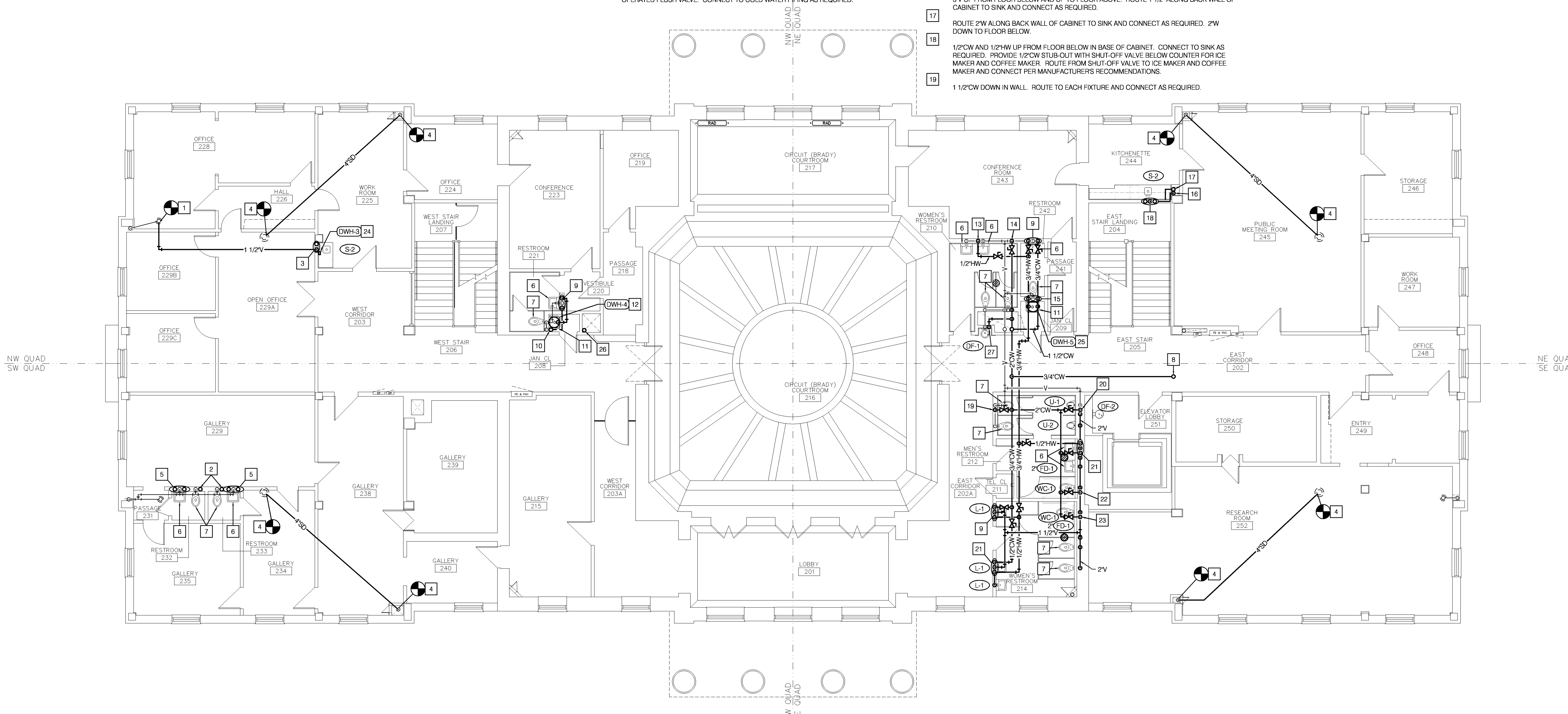
P-101

GENERAL NOTE

- A. UTILIZE EXISTING PATHWAYS OF REMOVED PIPE WHEREVER POSSIBLE.
 B. PROVIDE ALL RELOCATED SINK AND LAVATORIES WITH NEW TRAPS, SUPPLIES AND STOPS.

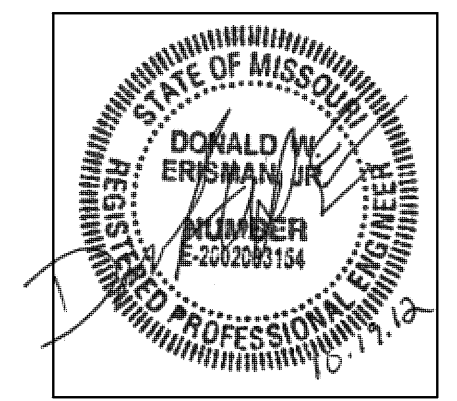
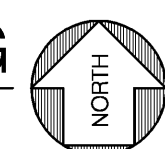
FLOOR PLAN NOTES

- 1 CONNECT NEW VENT PIPING TO EXISTING VENT PIPING.
- 2 1 1/4" CW UP FROM FLOOR BELOW AND CONNECT TO WATER CLOSET AS REQUIRED.
- 3 1 1/2" CW AND 2" W UP FROM FLOOR BELOW IN BASE OF CABINET. 1 1/2" V DOWN IN WALL. CONNECT TO SINK AS REQUIRED. PROVIDE 1/2" CW STUB-OUT WITH BACKFLOW PREVENTER AND SHUT-OFF VALVE BELOW COUNTER FOR ICE MAKER AND COFFEE MAKER. ROUTE FROM SHUT-OFF VALVE TO ICE MAKER AND COFFEE MAKER AND CONNECT PER MANUFACTURERS RECOMMENDATIONS.
- 4 CONNECT NEW STORM PIPING TO EXISTING ROOF DRAIN AND EXISTING STORM DRAIN STACK.
- 5 1/2" CW AND 1/2" HW UP FROM FLOOR BELOW. CONNECT TO LAVATORY AS REQUIRED.
- 6 RECONNECT EXISTING REFURBISHED LAVATORY. CONNECT TO EXISTING WASTE AS FIELD CONDITIONS REQUIRE. PROVIDE WITH TECHNICAL CONCEPTS MILANO BATTERY POWERED SENSOR OPERATED FAUCET. CONNECT FAUCET TO COLD WATER AND HOT WATER AS REQUIRED.
- 7 RECONNECT EXISTING REFURBISHED WATER CLOSET. CONNECT TO EXISTING WASTE AS FIELD CONDITIONS REQUIRE. PROVIDE WITH SLOAN G2 OPTIMA BATTERY POWERED SENSOR OPERATED FLUSH VALVE. CONNECT TO COLD WATER PIPING AS REQUIRED.
- 8 3/4" CW UP TO FLOOR ABOVE.
- 9 1/2" CW AND 1/2" HW DOWN IN WALL. CONNECT TO LAVATORY AS REQUIRED.
- 10 1 1/2" CW UP FROM FLOOR BELOW AND 3/4" UP TO FLOOR ABOVE. ROUTE 1" CW TO WATER CLOSET AND CONNECT AS REQUIRED. ROUTE 1/2" CW TO UTILITY SINK AND CONNECT AS REQUIRED. ROUTE 3/4" CW TO WATER HEATER AND CONNECT AS REQUIRED.
- 11 RECONNECT EXISTING REFURBISHED UTILITY SINK. CONNECT TO EXISTING WASTE AS FIELD CONDITIONS REQUIRE. PROVIDE WITH NEW CHICAGO 887-CP FAUCET. CONNECT FAUCET TO COLD WATER AND HOT WATER AS REQUIRED.
- 12 DOMESTIC WATER HEATER. MOUNT ABOVE JANITOR SINK AS HIGH AS POSSIBLE. RE: WALL MOUNTED ELECTRIC WATER HEATER DETAIL.
- 13 1/2" HW DOWN IN WALL. ROUTE IN WALL TO EACH FIXTURE AND CONNECT AS REQUIRED.
- 14 1/2" CW DOWN IN WALL. ROUTE IN WALL TO EACH FIXTURE AND CONNECT AS REQUIRED.
- 15 1 1/4" CW AND 1/2" HW DOWN IN WALL. ROUTE TO EACH FIXTURE AND CONNECT AS REQUIRED.
- 16 1 1/2" CW DOWN IN WALL. ROUTE TO EACH FIXTURE AND CONNECT AS REQUIRED.
- 17 ROUTE 2" W ALONG BACK WALL OF CABINET TO SINK AND CONNECT AS REQUIRED. 2" W DOWN TO FLOOR BELOW.
- 18 1/2" CW AND 1/2" HW UP FROM FLOOR BELOW IN BASE OF CABINET. CONNECT TO SINK AS REQUIRED. PROVIDE 1/2" CW STUB-OUT WITH SHUT-OFF VALVE BELOW COUNTER FOR ICE MAKER AND COFFEE MAKER. ROUTE FROM SHUT-OFF VALVE TO ICE MAKER AND COFFEE MAKER AND CONNECT PER MANUFACTURERS RECOMMENDATIONS.
- 19 1 1/2" CW DOWN IN WALL. ROUTE TO EACH FIXTURE AND CONNECT AS REQUIRED.
- 20 1" CW DOWN IN WALL. ROUTE TO EACH FIXTURE AND CONNECT AS REQUIRED.
- 21 1/2" CW AND 1/2" HW DOWN IN WALL. ROUTE TO EACH FIXTURE AND CONNECT AS REQUIRED.
- 22 1" CW DOWN IN WALL. CONNECT TO FIXTURE AS REQUIRED.
- 23 2" CW DOWN IN WALL. ROUTE TO EACH FIXTURE AND CONNECT AS REQUIRED.
- 24 DOMESTIC WATER HEATER. RE: TANKLESS WATER HEATER DETAIL.
- 25 DOMESTIC WATER HEATER. MOUNT IN ATTIC SPACE CLOSE TO CATWALK. RE: ELECTRIC WATER HEATER DETAIL.
- 26 1 1/4" NG UP FROM FLOOR BELOW AND UP TO ATTIC SPACE ABOVE.
- 27 1/2" CW DOWN IN WALL AND CONNECT TO DRINKING FOUNTAIN AS REQUIRED.



SECOND FLOOR PLAN-PLUMBING

SCALE: 1/8" = 1'-0"



MECH / PLUMB / ELECTRICAL ENGINEER

LANKFORD + associates
 1730 WALNUT STREET
 KANSAS CITY, MISSOURI 64108
 TEL. (816) 221-1411
 FAX. (816) 221-1429

HISTORIC TRUMAN COURTHOUSE

INTERIOR RENOVATION

102 NORTH MAIN STREET, INDEPENDENCE, MISSOURI 64050

ISSUED FOR CONSTRUCTION

PROJECT NO.	10-19-2012
DATE	JDB/SMP
DRAWN BY	DWE
CHECKED BY	LDR
REVISION DATE	DESCRIPTION

SHEET TITLE & NUMBER

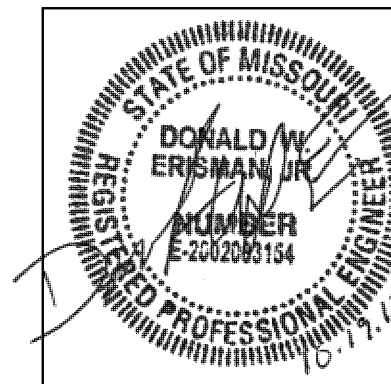
SECOND FLOOR PLAN
 PLUMBING

COPYRIGHT © 2012
 PIPER-WIND ARCHITECTS, INC.



P-102

DWG FILE: P:\4000\0406_Jackson County Historic Court House\Drawings\0406P102.dwg USER: jdb88 PLOT DATE/TIME: 10/18/2012 2:34pm

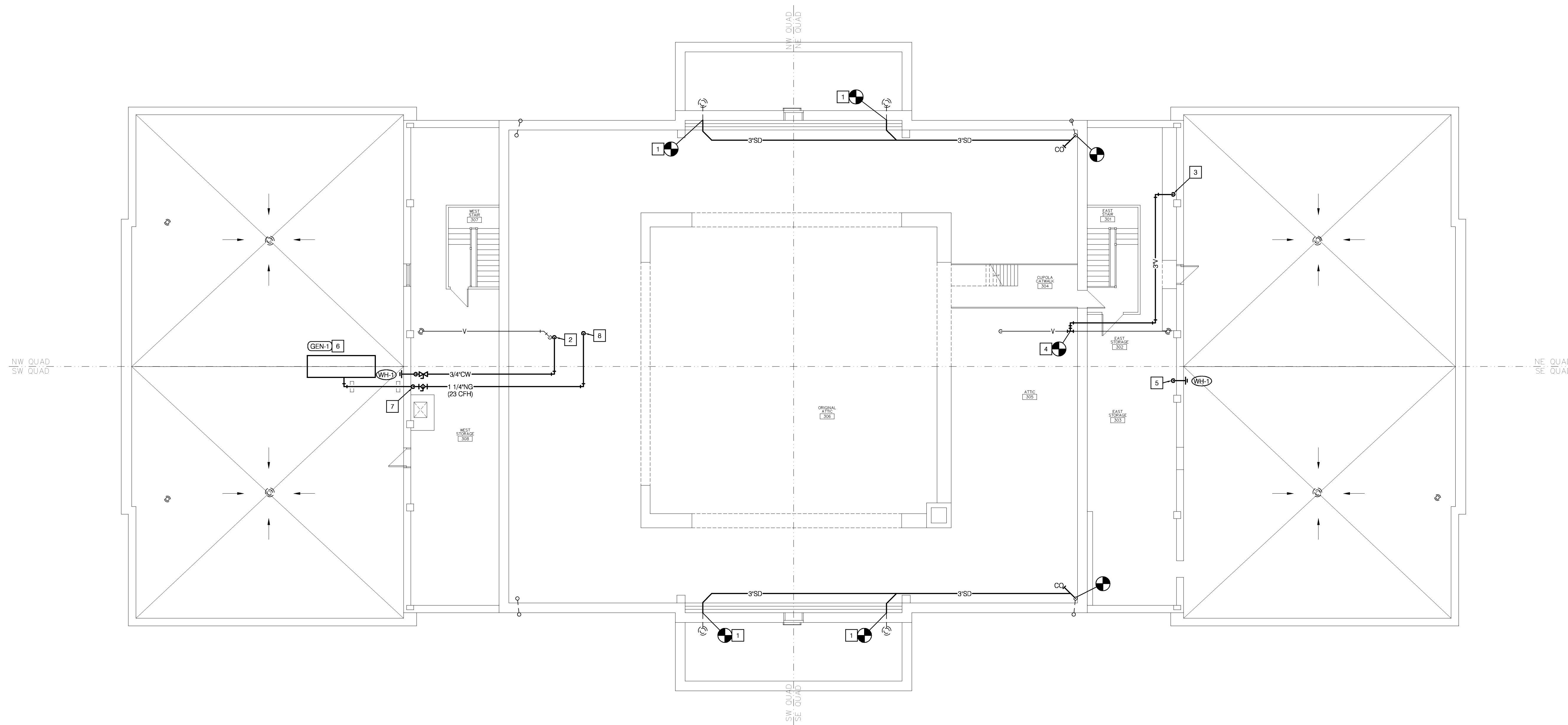


MECH / PLUMB / ELECTRICAL ENGINEER:

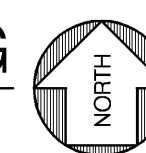
LANKFORD + associates
 1730 WALNUT STREET
 KANSAS CITY, MISSOURI 64108
 TEL. (816) 221-1411
 FAX. (816) 221-1429

FLOOR PLAN NOTES

- 1 CONNECT NEW STORM PIPING TO EXISTING STORM PIPING.
- 2 3/4" CW UP FROM FLOOR BELOW.
- 3 3" V UP FROM FLOOR BELOW.
- 4 CONNECT NEW VENT PIPING TO EXISTING VENT PIPING.
- 5 3/4" CW UP FROM FLOOR BELOW. PROVIDE SHUT-OFF VALVE IN RISER. COORDINATE MOUNTING HEIGHT OF WALL HYDRANT WITH ARCHITECT PRIOR TO INSTALLATION.
- 6 GENERATOR. CONNECT GAS PIPING TO GENERATOR PER MANUFACTURERS RECOMMENDATIONS.
- 7 1 1/4" NG THRU WALL 12" ABOVE ROOF LEVEL. SEAL WALL PENETRATION WEATHERTIGHT.
- 8 1 1/4" NG UP FROM FLOOR BELOW.



ATTIC/ROOF PLAN-PLUMBING
 SCALE: 1/8" = 1'-0"



DWG FILE: P:\0020\048_Jackson County Historic Court House\Drawings\048P103.dwg USER: lwb PLOT DATE/TIME: 10/19/2012 8:51pm

HISTORIC TRUMAN COURTHOUSE

INTERIOR RENOVATION

102 NORTH MAIN STREET, INDEPENDENCE, MISSOURI 64050

ISSUED FOR CONSTRUCTION

PROJECT NO.	DATE
	10-19-2012
DRAWN BY	IDB/SMP
CHECKED BY	DWE
CHECKED BY	LDR
REVISED DATE	DESCRIPTION

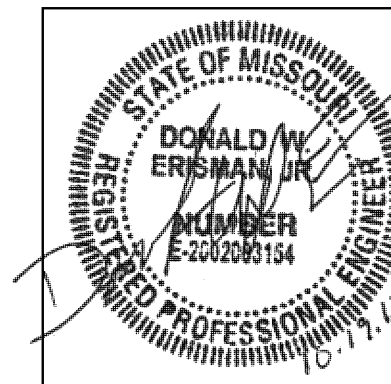
SHEET TITLE & NUMBER

ATTIC/ROOF PLAN
 PLUMBING

COPYRIGHT © 2012
 PIPER-WIND ARCHITECTS, INC.



P-103



MECH / PLUMB / ELECTRICAL ENGINEER:

LANKFORD + associates
 1730 WALNUT STREET
 KANSAS CITY, MISSOURI 64108
 TEL. (816) 221-1411
 FAX. (816) 221-1429

HISTORIC TRUMAN COURTHOUSE

INTERIOR RENOVATION

102 NORTH MAIN STREET, INDEPENDENCE, MISSOURI 64050

ISSUED FOR CONSTRUCTION

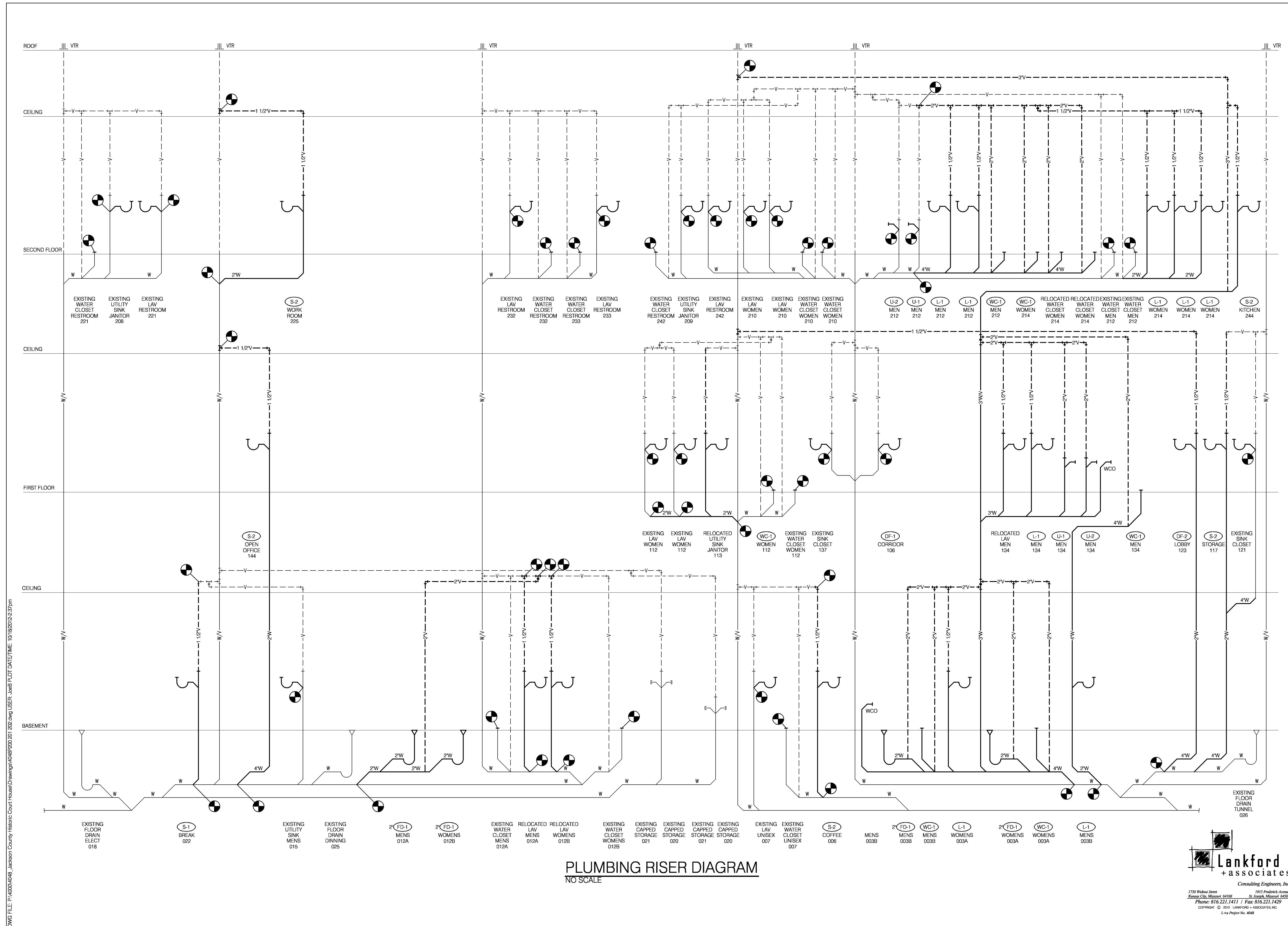
PROJECT NO.	
DATE	10-19-2012
DRAWN BY	JD/SMP
CHECKED BY	DWE
CHECKED BY	LDR
REVISED DATE	DESCRIPTION

SHEET TITLE & NUMBER

PLUMBING RISER

COPYRIGHT © 2012
 PIPER-WIND ARCHITECTS, INC.

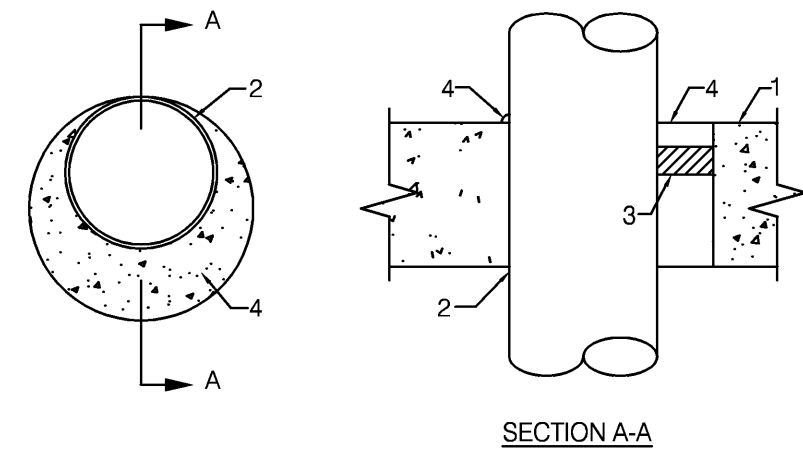
P-200



PLUMBING RISER DIAGRAM
 NO SCALE



DWG FILE: P:\0000\048_Jackson County Courthouse\Drawings\KABP200 20 202.dwg USER: jweb PLOT DATE/TIME: 10/18/2012 2:37pm



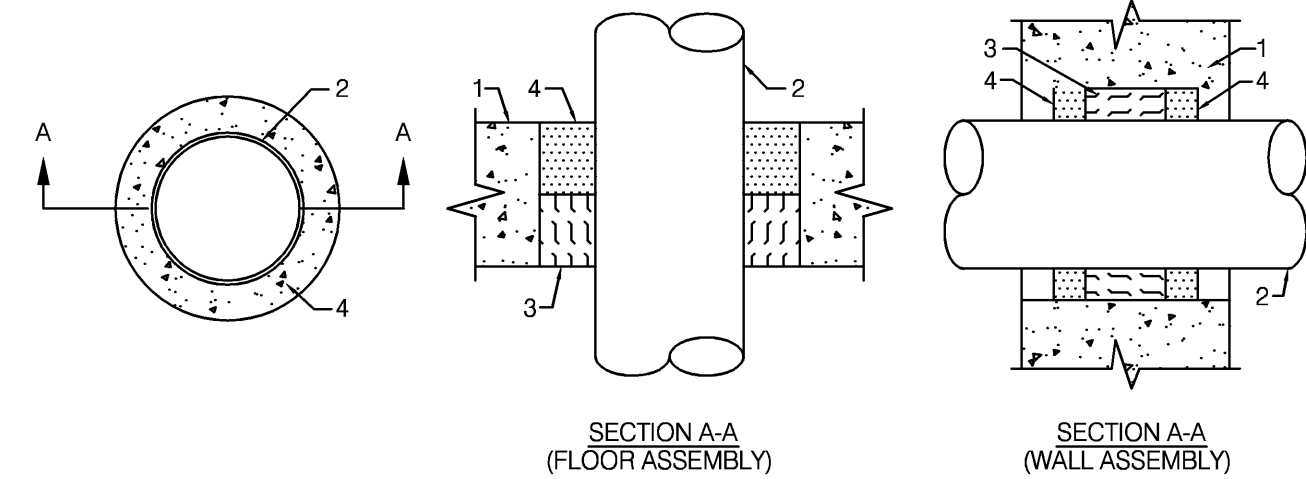
SYSTEM NO. 49
F RATINGS - 2 AND 3 HR. (SEE ITEM 2A)
T RATING - 0 HR.

- 1) FLOOR OR WALL ASSEMBLY - MINIMUM 4 1/2" THICK LIGHTWEIGHT OR NORMAL WEIGHT (100-150 PCF) CONCRETE. WALL ASSEMBLY MAY ALSO BE CONSTRUCTED OF ANY UL CLASSIFIED CONCRETE BLOCKS. MAXIMUM DIAMETER OF CIRCULAR THROUGH OPENING IS 22 1/2". SEE CONCRETE BLOCK (CAZT) CATEGORY IN FIRE RESISTANCE DIRECTORY FOR NAMES OF MANUFACTURERS.
- 1A) STEEL SLEEVE - (OPTIONAL, NOT SHOWN) - NOMINAL 12" DIAMETER (OR SMALLER) SCHEDULE 40 (OR HEAVIER) STEEL PIPE SLEEVE CAST INTO CONCRETE FLOOR OR WALL. SLEEVE TO BE FLUSH WITH OR PROJECT MAX 2" FROM TOP SURFACE OF FLOOR OR FROM BOTH SURFACES OF WALL.
- 2) PIPE OR CONDUIT - NOMINAL 2" DIAMETER (OR SMALLER) SCHEDULE 10S (OR HEAVIER) STEEL PIPE, NOMINAL 6" DIAMETER (OR SMALLER) RIGID STEEL CONDUIT, NOMINAL 6" DIAMETER (OR SMALLER) TYPE L (OR HEAVIER) COPPER TUBE, NOMINAL 4" DIAMETER (OR SMALLER) CAST IRON PIPE OR NOMINAL 4" DIAMETER (OR SMALLER) STEEL EMT. MAXIMUM ONE PIPE OR CONDUIT PER THROUGH OPENING. MAXIMUM ANNULAR SPACE BETWEEN PIPE OR CONDUIT AND EDGE OF THROUGH OPENING IS ZERO IN (POINT CONTACT). PIPE OR CONDUIT TO BE RIGIDLY SUPPORTED ON BOTH SIDES OF FLOOR OR WALL ASSEMBLY.
- 2A) STEEL VENT DUCT - (NOT SHOWN) - AS AN ALTERNATE TO THE PIPE OR CONDUIT, NOMINAL 4" DIAMETER (OR SMALLER) NO. 28 GAUGE (OR HEAVIER) GALVANIZED STEEL VENT DUCT MAY BE USED IN THROUGH OPENINGS OF FLOOR ASSEMBLIES PROVIDED MAXIMUM ANNULAR SPACE DOES NOT EXCEED 7/8". WHEN STEEL VENT DUCT IS USED, F RATING IS 2 HRS.
- 3) PACKING MATERIAL - POLYETHYLENE BACKER ROD OR NOMINAL 1" THICKNESS OF TIGHTLY-PACKED CERAMIC (ALUMINA SILICA) FIBER BLANKET, MINERAL-WOOL BATT OF GLASS FIBER INSULATION MATERIAL USED AS A PERMANENT FORM. PACKING MATERIAL TO BE RECESSED FROM TOP SURFACE OF FLOOR OR FROM BOTH SURFACES OF WALL AS REQUIRED TO ACCOMMODATE THE REQUIRED THICKNESS OF CAULK FILL MATERIAL (ITEM 4). AS AN ALTERNATE WHEN MAXIMUM PIPE SIZE IS 10" DIAMETER AND WHEN MAXIMUM ANNULAR SPACE IS 1" OR LESS, A MINIMUM 1" THICKNESS OF TIGHTLY-PACKED CERAMIC FIBER BLANKET OR MINERAL-WOOL BATT PACKING MATERIAL MAY BE RECESSED MINIMUM 1/2" FROM BOTTOM SURFACE OF FLOOR OR FROM EITHER SIDE OF WALL.
- 4) FILL, VOID OR CAVITY MATERIALS* - CAULK - APPLIED TO FILL THE ANNULAR SPACE TO THE MINIMUM THICKNESS SHOWN IN THE FOLLOWING TABLE:

MAXIMUM PIPE DIAMETER (IN.)	MAXIMUM ANNULAR SPACE (IN.)	PACKING MATERIAL TYPE (a)	MINIMUM CAULK THICKNESS (IN.)
10	1	BR, CF, GF or MW	1/2 (b)
10	1	CF or MW	1/2 (c)
20	2 1/2	BR, CF, GF or MW	1 (b)

- (a) BR = POLYETHYLENE BACKER ROD.
CF = CERAMIC FIBER BLANKET.
GF = GLASS FIBER INSULATION.
MW = MINERAL-WOOL BATT.
- (b) CAULK INSTALLED FLUSH WITH TOP SURFACE OF FLOOR OR BOTH SURFACE OF WALL.
(c) CAULK INSTALLED FLUSH WITH BOTTOM SURFACE OF FLOOR OR ONE SURFACE OF WALL.

* BEARING THE UL CLASSIFICATION MARKING

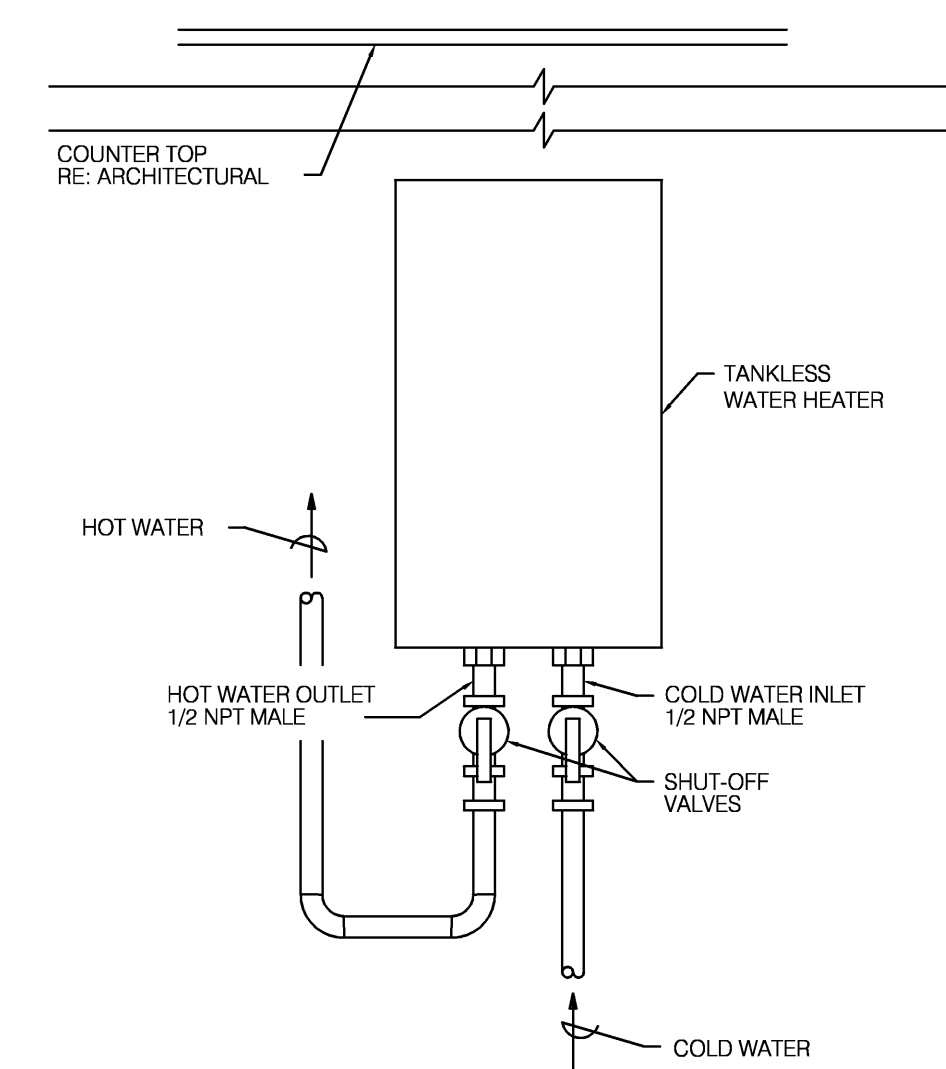


SYSTEM NO. CAJ1012
(FORMERLY SYSTEM NO. 129)
F RATINGS - 1 HR.
T RATING - 0 HR.

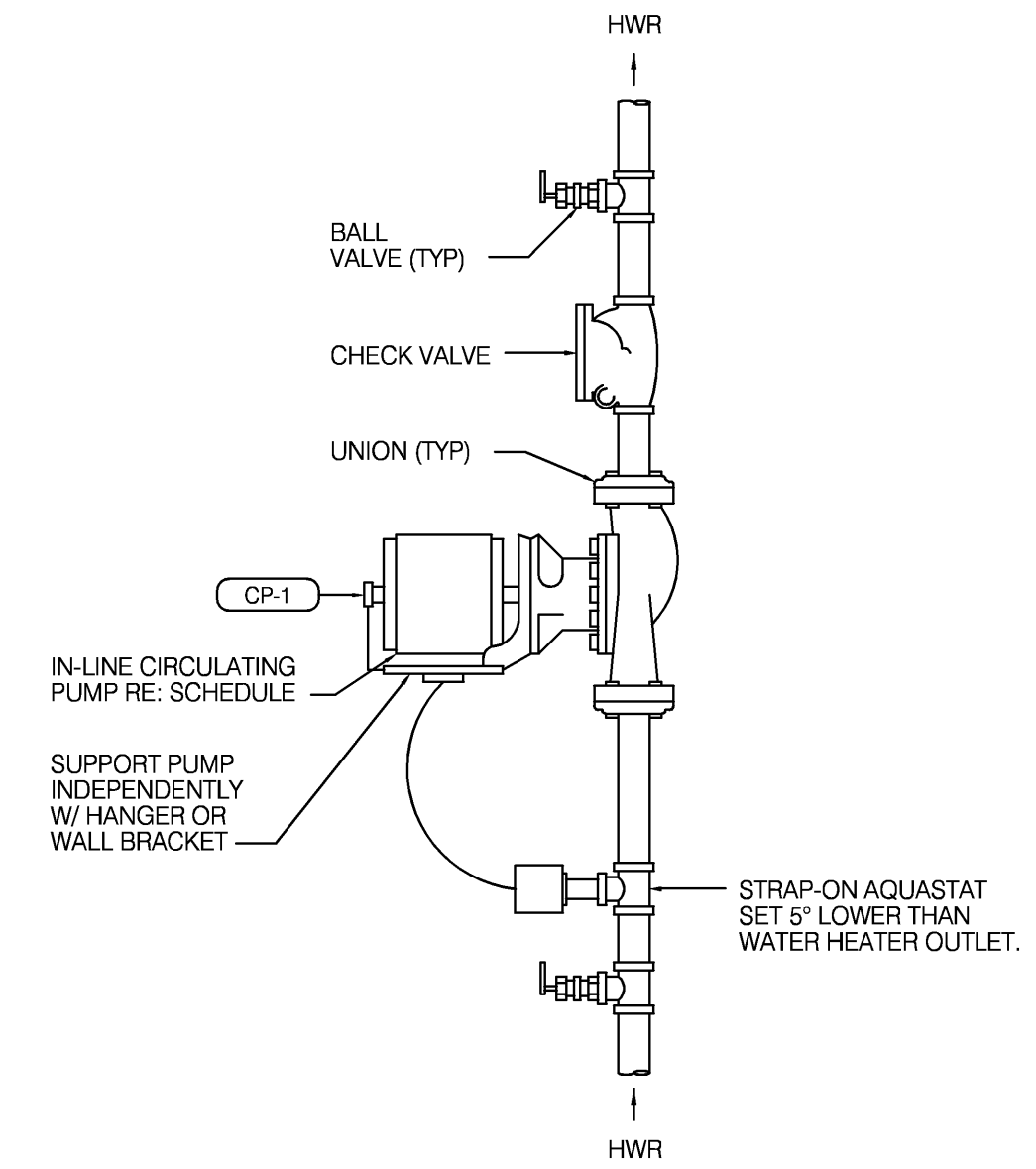
- 1) FLOOR OR WALL ASSEMBLY - MINIMUM 5" THICK REINFORCED NORMAL WEIGHT (100-150 PCF) CONCRETE. WALL MAY ALSO BE CONSTRUCTED OF ANY UL CLASSIFIED CONCRETE BLOCKS*. MAXIMUM DIAMETER OF OPENING IS 6". SEE CONCRETE BLOCKS (CAZT) CATEGORY IN THE FIRE RESISTANCE DIRECTORY FOR NAMES OF MANUFACTURERS.
- 2) THROUGH PENETRANTS - ONE METALLIC PIPE OR CONDUIT TO BE CENTERED WITHIN THE FIRESTOP SYSTEM. A NOMINAL ANNULAR SPACE OF 3/4" IS REQUIRED WITHIN THE FIRESTOP SYSTEM. PIPE OR CONDUIT TO BE RIGIDLY SUPPORTED ON BOTH SIDES OF FLOOR OR WALL ASSEMBLY. THE FOLLOWING TYPES AND SIZES OF METALLIC PIPES OR CONDUITS MAY BE USED:
A. STEEL PIPE - NOMINAL 4" DIAMETER (OR SMALLER) SCHEDULE 5 (OR HEAVIER) STEEL PIPE
B. CONDUIT - NOMINAL 4" DIAMETER (OR SMALLER) ELECTRICAL METALLIC TUBING OR STEEL CONDUIT.
- 3) PACKING MATERIAL - MINIMUM 3" THICKNESS OF MINIMUM 4.4 PCF MINERAL WOOL BATT INSULATION FIRMLY PACKED INTO OPENING AS A PERMANENT FORM. PACKING MATERIAL TO BE RECESSED FROM TOP SURFACE OF FLOOR AS REQUIRED TO ACCOMMODATE THE REQUIRED THICKNESS OF FILL MATERIAL. PACKING MATERIAL TO BE CENTERED IN WALLS MID-DEPTH AND RECESSED TO ALLOW FOR INSTALLATION OF FILL MATERIAL.
- 4) FILL, VOID OR CAVITY MATERIALS* - SEALANT OR FOAM - MINIMUM 1/2" THICKNESS OF FILL MATERIAL APPLIED WITHIN ANNULUS, FLUSH WITH TOP SURFACE OF FLOOR. IN WALL, FILL MATERIAL TO BE APPLIED ON EACH SIDE OF PACKING MATERIAL. FOAMED SILICONE TO BE INSTALLED AS DESCRIBED IN THE MANUFACTURERS APPLICATION INSTRUCTIONS AT A DENSITY OF 14 PCF MINIMUM TO 21 PCF MAXIMUM. THE THICKNESS OF FILL MATERIAL IS DEPENDENT UPON THE TYPE OF FILL MATERIAL AS SHOWN IN THE TABLE BELOW.

FILL MATERIAL IDENTIFICATION	MINIMUM THICK OF FILL MATERIAL (IN.)
TYPE FS FOAM	1
TYPE FS SEALANT OR FS SEALANT SL	1/2

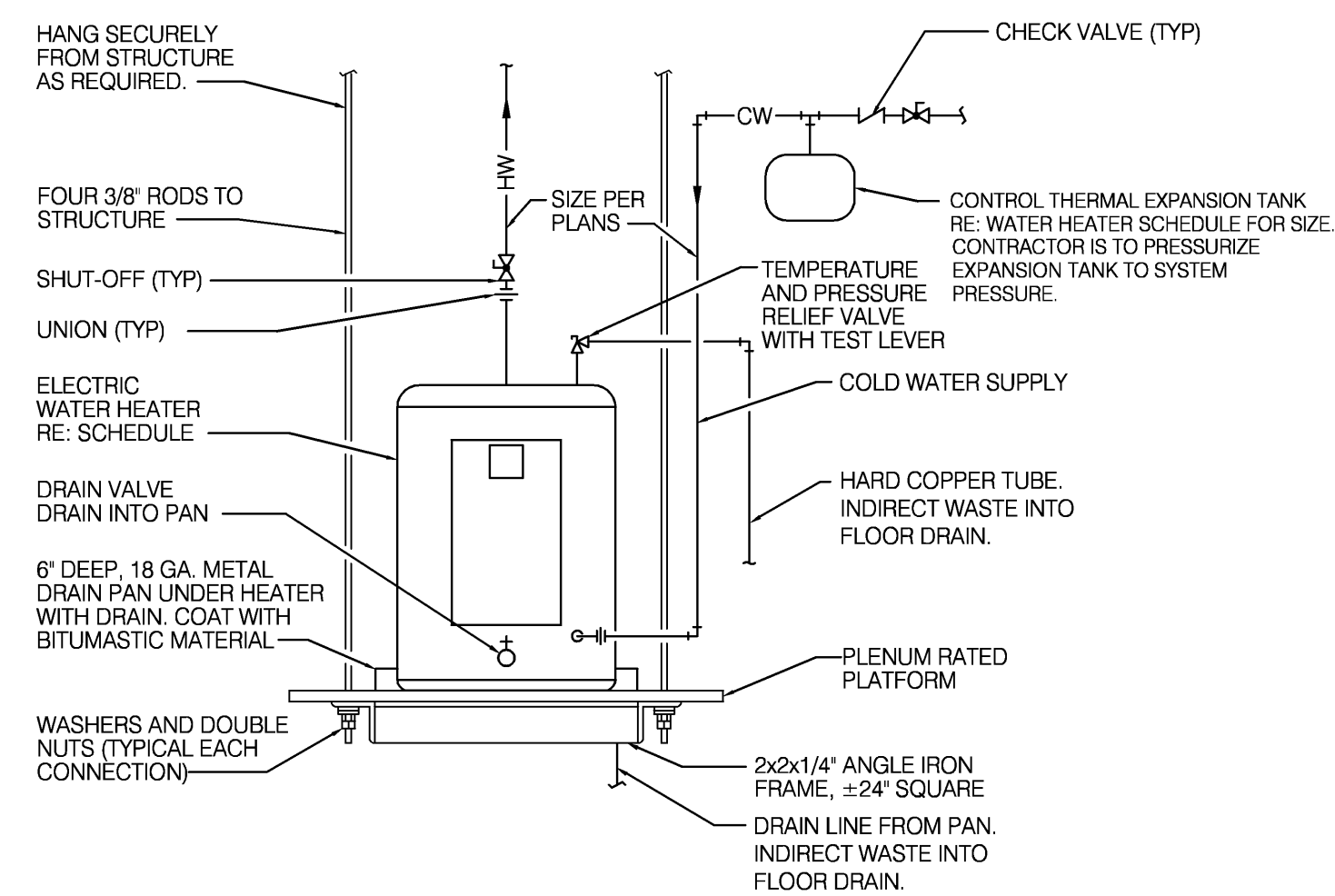
DOW CORNING CORP. - TYPES FS SEALANT, FS SEALANT SL (FLOOR ONLY) OR FS FOAM
* BEARING THE UL CLASSIFICATION MARKING.



2 TANKLESS WATER HTR DETAIL
NO SCALE DWH-2,3

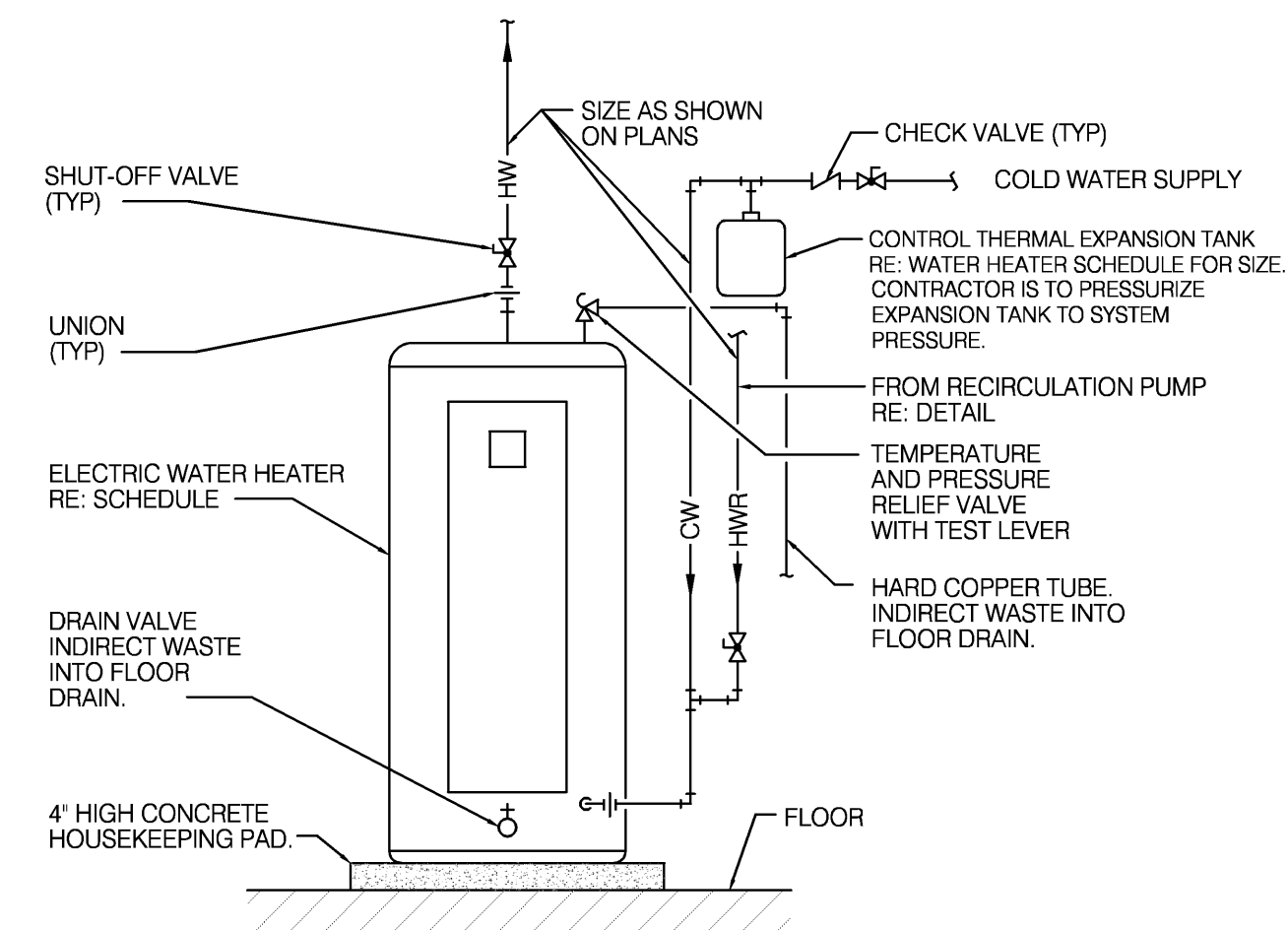


3 CIRCULATING PUMP DETAIL
NO SCALE

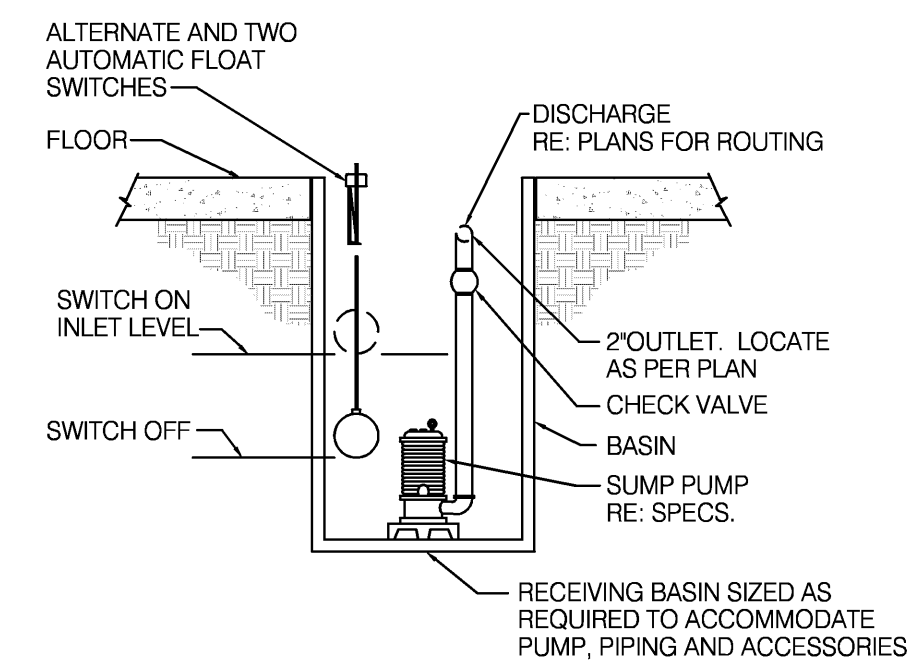


NOTE: NO PIPING SHALL BE LOCATED DIRECTLY BELOW WATER HEATER.

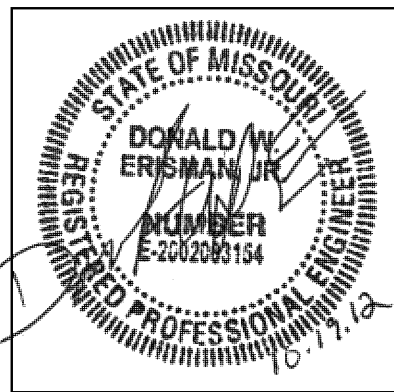
4 ELECTRIC WATER HEATER DETAIL
NO SCALE DWH-5



5 ELECTRIC WATER HEATER DETAIL
NO SCALE DWH-1



6 SUMP PUMP DETAIL
NO SCALE



MECH / PLUMB / ELECTRICAL ENGINEER:
LANKFORD + associates
1730 WALNUT STREET
KANSAS CITY, MISSOURI 64108
TEL. (816) 221-1411
FAX. (816) 221-1429

HISTORIC TRUMAN COURTHOUSE

INTERIOR RENOVATION

102 NORTH MAIN STREET, INDEPENDENCE, MISSOURI 64050

ISSUED FOR CONSTRUCTION

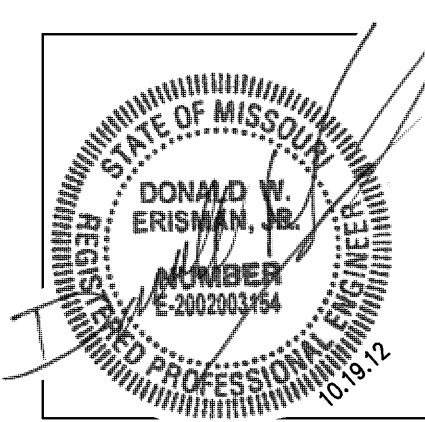
PROJECT NO.	DATE
	10-19-2012
DRAWN BY	IDB/SMP
CHECKED BY	DW/E
CHECKED BY	LDR
REVISED DATE	DESCRIPTION

SHEET TITLE & NUMBER

PLUMBING DETAILS

COPYRIGHT © 2012
PIPER-WIND ARCHITECTS, INC.





MECH / PLUMB / ELECTRICAL ENGINEER:
LANKFORD + associates
 1730 WALNUT STREET
 KANSAS CITY, MISSOURI 64108
 TEL. (816) 221-1411
 FAX. (816) 221-1429

HISTORIC TRUMAN COURTHOUSE
 INTERIOR RENOVATION
 102 NORTH MAIN STREET, INDEPENDENCE, MISSOURI 64050

ISSUED FOR CONSTRUCTION

PROJECT NO.	
DATE	10-19-2012
DRAWN BY	LD/SMP
CHECKED BY	DWE
REVISED DATE	DESCRIPTION
10-26-12	ADDENDUM #1

SHEET TITLE & NUMBER
 PLUMBING DETAILS AND SCHEDULES
 COPYRIGHT © 2012
 PIPER-WIND ARCHITECTS, INC.

Consulting Engineers, Inc.
 1730 Walnut Street
 Kansas City, Missouri 64108
 1915 Frederick Avenue
 St. Joseph, Missouri 64501
 Phone: 816.221.1411 / Fax: 816.221.1429
 Copyright © 2012 LANKFORD + ASSOCIATES, INC.
 L+e Project No. 4648

P-202

GENERAL NOTES (TYPICAL ALL SHEETS)

- A. PLUMBING CONTRACTOR IS RESPONSIBLE TO SEE THAT WORK MEETS AND IS IN ACCORDANCE WITH ALL REQUIREMENTS OF FEDERAL, STATE, AND LOCAL LAWS AND CODES AND/OR REQUIREMENTS, INCLUDING HEALTH CODES AND BUILDING OWNER.
- B. ALL EXISTING PIPING SHOWN ON DRAWINGS IS SCHEMATIC AND IS BASED ON EXISTING RECORD DRAWINGS PROVIDED BY THE OWNER AND DO NOT REFLECT EXACT EXISTING CONDITIONS. CONTRACTOR TO FIELD VERIFY EXACT DEPTH AND/OR LOCATIONS ON JOB SITE. CONTRACTOR SHALL REROUTE NEW WORK TO ACCOMMODATE EXACT LOCATIONS OF EXISTING UTILITIES, STUBOUTS AND/OR CONNECTIONS.
- C. CUTTING AND PATCHING OF FLOORS, WALLS, CEILING, ETC., REQUIRED IN STRICT ACCORDANCE WITH THE RULES AND REGULATIONS OF THE ARCHITECT'S SPECIFICATIONS.
- D. COORDINATE ALL WORK WITH OTHER TRADES PRIOR TO INSTALLATION TO AVOID ROUTING CONFLICTS.
- E. ANY MATERIAL REMOVED THAT OWNER DOES NOT WISH TO RETAIN SHALL BE REMOVED FROM PROJECT SITE AND DISPOSED OF BY CONTRACTOR.
- F. INSTALL ELASTOMERIC JOINT SEALER AROUND ALL PIPES PASSING THRU INTERIOR NON-RATED CONCRETE AND MASONRY WALLS, GYPSUM-BOARD PARTITIONS, AND CONCRETE FLOOR/ROOF SLABS. FOR FIRE RATED INTERIOR CONCRETE AND MASONRY WALLS, GYPSUM-BOARD PARTITIONS, AND CONCRETE FLOOR/ROOF SLABS SEAL ALL PIPES. INSTALL FIRESTOP MATERIALS IN ALL GAPS PRIOR TO SEALANT APPLICATION. INSTALL SEALER ACCORDING TO MANUFACTURERS WRITTEN INSTRUCTIONS.
- G. PLUMBING CONTRACTOR SHALL MAKE FINAL CONNECTION TO ALL EQUIPMENT BY OTHERS. VERIFY CONNECTIONS SIZES AND REQUIREMENTS.
- H. PIPING ROUTED BELOW COUNTER IN CABINETS SHALL BE ROUTED AS NOTED. NOT TO INTERFERE WITH DRAWERS, SHELVES, EQUIPMENT, ETC., AND SUPPORT FROM BACK WALL OF CABINET.
- I. PLUMBING CONTRACTOR SHALL COORDINATE ALL CORE DRILLING WITH ARCHITECT.
- P. PLUMBING CONTRACTOR SHALL SCAN FLOOR UTILIZING GROUND PENETRATING RADAR PRIOR TO ANY CORE DRILLING OR SAW CUTTING OF SLAB AND SHALL VERIFY PLACEMENT WITH BUILDING OWNERS REPRESENTATIVE PRIOR TO DRILLING.
- Q. PLUMBING CONTRACTOR SHALL PROVIDE PRO-SET SYSTEMS 'TRAP GUARD' IN ALL FLOOR DRAIN TRAPS WITHIN PROJECT SCOPE OF WORK.
- R. RESTRICTED ACCESS OVER CEILING AREAS: APPLIED CONSTRUCTION LOADS OVER EXISTING PLASTER CEILINGS SHALL BE LIMITED TO NOT MORE THAN 175 POUNDS. THIS LOAD SHALL BE APPLIED DIRECTLY TO THE EXISTING CEILING JOISTS. NO LOAD SHALL BE PERMITTED TO BE IN DIRECT CONTACT WITH THE CEILING GRID BETWEEN JOISTS. IF LOADS IN EXCESS OF 175 POUNDS MUST BE APPLIED ABOVE THE CEILING, THE CONTRACTOR SHALL PROVIDE A TEMPORARY PLATFORM FRAMING BACK TO THE EXISTING VERTICAL STUDS THAT PRESENTLY SUPPORT THE EXISTING CEILING JOISTS. CONSTRUCTION DOCUMENTS FOR SUCH A PLATFORM SHALL BE DESIGNED BY THE CONTRACTORS PROFESSIONAL ENGINEER AND SHALL BEAR HIS MISSOURI SEAL. THESE PLANS SHALL BE SUBMITTED TO THE PROJECT ARCHITECT AND STRUCTURAL ENGINEER FOR REVIEW.
- S. UPON REQUEST FOR ELECTRONIC FILES, CONTRACTOR SHALL FILL OUT, SIGN AND RETURN ELECTRONIC MEDIA RELEASE FORM FROM ENGINEER AND PROVIDE PAYMENT FOR FEES STIPULATED ON ELECTRONIC MEDIA RELEASE FORM. UPON RECEIPT OF COMPLETED RELEASE FORM AND PAYMENT, ELECTRONIC FILES WILL BE RELEASED.

BRANCH FIXTURE SCHEDULE

PLUMBING FIXTURE OR ITEMS	DRAIN-WASTE-SOIL-VENT					COLD WATER		HOT WATER		FIXTURE TYPE SEE SPECIFICATIONS	NOTES
	TRAP	ARM	VERT	HORIZ	VENT	SUPPLY	BRANCH	SUPPLY	BRANCH		
LAVATORY	1-1/2	1-1/2	1-1/2	2	1-1/2	1/2	1/2	1/2	1/2	L-1	1
WATER CLOSET (FLUSH VALVE)	INT	3	4	4	2	1	1-1/4	-	-	WC-1	1
URINAL	INT	2	2	2	1-1/2	3/4	1	-	-	U-1, U-2	1
SERVICE SINK	2	2	2	2	1-1/2	1/2	1/2	1/2	1/2	EXISTING	
SINK	1-1/2	1-1/2	2	2	1-1/2	1/2	1/2	1/2	1/2	S-1, S-2	
DRINKING FOUNTAIN	1-1/4	1-1/4	1-1/4	1-1/2	1-1/4	1/2	1/2	-	-	DF-1, DF-2	1
WALL HYDRANT	-	-	-	-	-	3/4	3/4	-	-	WH-1	
FLOOR DRAIN	2	2	2	2	-	-	-	-	-	FD-1	

NOTES: 1. FIXTURE L-1, U-1, DF-2 AND WC-1 FOR HANDICAP USE.

WATER HEATER SCHEDULE (ELECTRIC)

MARK NO.	MANUFACTURER	MODEL NO.	TANK LINING	TANK CAPACITY (GAL)	RECOVERY (GPH)	INPUT (KW)	THERMAL EXPANSION TANK MODEL NO.	ELECTRICAL			NOTES
								VOLT	Ø	HZ	
DWH-1	AO SMITH	DEN-40	GLASS	40	46@80°F	9	PLT-12	208	3	60	1,2
DWH-4	AO SMITH	DEL-6	GLASS	6	10@80°F	2	PLT-5	208	1	60	1,2
DWH-5	AO SMITH	DEL-20	GLASS	20	20@80°F	4	PLT-5	208	1	60	1,2

NOTES: 1. PROVIDE WITH TEMPERATURE AND PRESSURE RELIEF VALVE AND DRAIN.
 2. PROVIDE WITH CONTROL THERMAL EXPANSION TANK, WATTS MODEL AS SCHEDULED WITH WATTS SCV SERVICE CHECK VALVE.

PLUMBING PUMP SCHEDULE

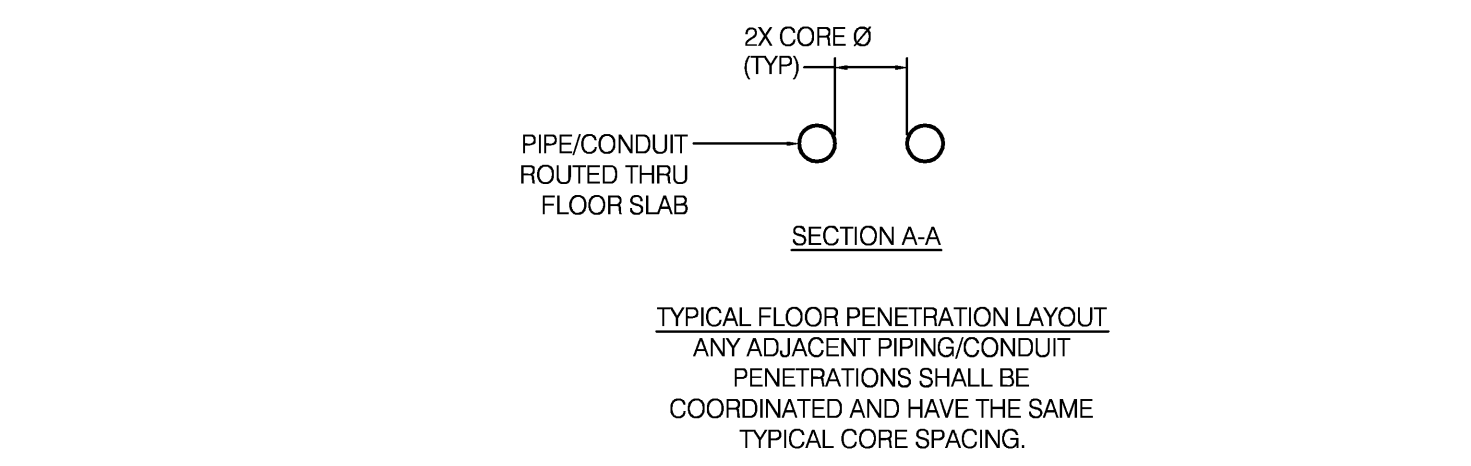
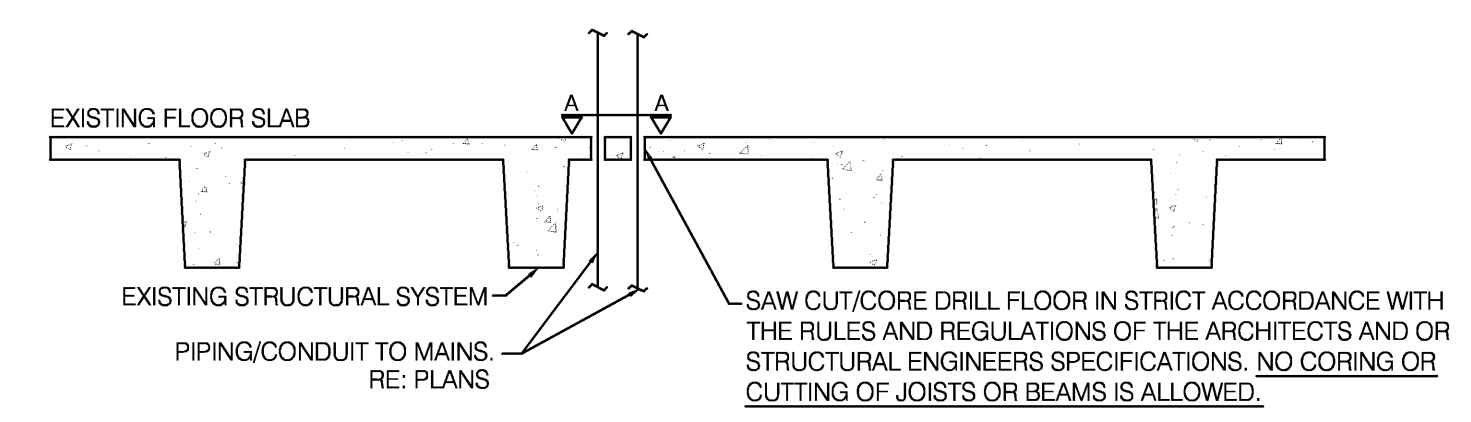
MARK NO.	MANUFACTURER	MODEL NO.	USE	FLOW (GPM)	HEAD (FT.)	RPM	ELECTRICAL				NOTES
							VOLT	Ø	HZ	HP	
CP-1	BELL&GOSSETT	NRF-22	HOT WATER RECIRCULATING	.5	10	2940	120	1	60	92W	1
SP-1	WEIL	1411	DUPLX ELEVATOR SUMP PUMP	50	20	1750	120	1	60	.5	2
SP-2	WEIL	1408	DUPLX STORM WATER SUMP PUMP	30	20	1750	120	1	60	1/3	2

NOTES: 1. PROVIDE WITH AQUASTAT AND AUTOMATIC TIMER KIT.
 2. PROVIDE WITH 8320 DUPLX ALARM FLOAT SWITCH SYSTEM, DIFFERENTIAL PIGGYBACK FLOAT SWITCH PUMP CONTROL, 8131 DUPLX CONTROL PANEL, NEMA-1 HWA PANEL, AND FLOAT SWITCH.

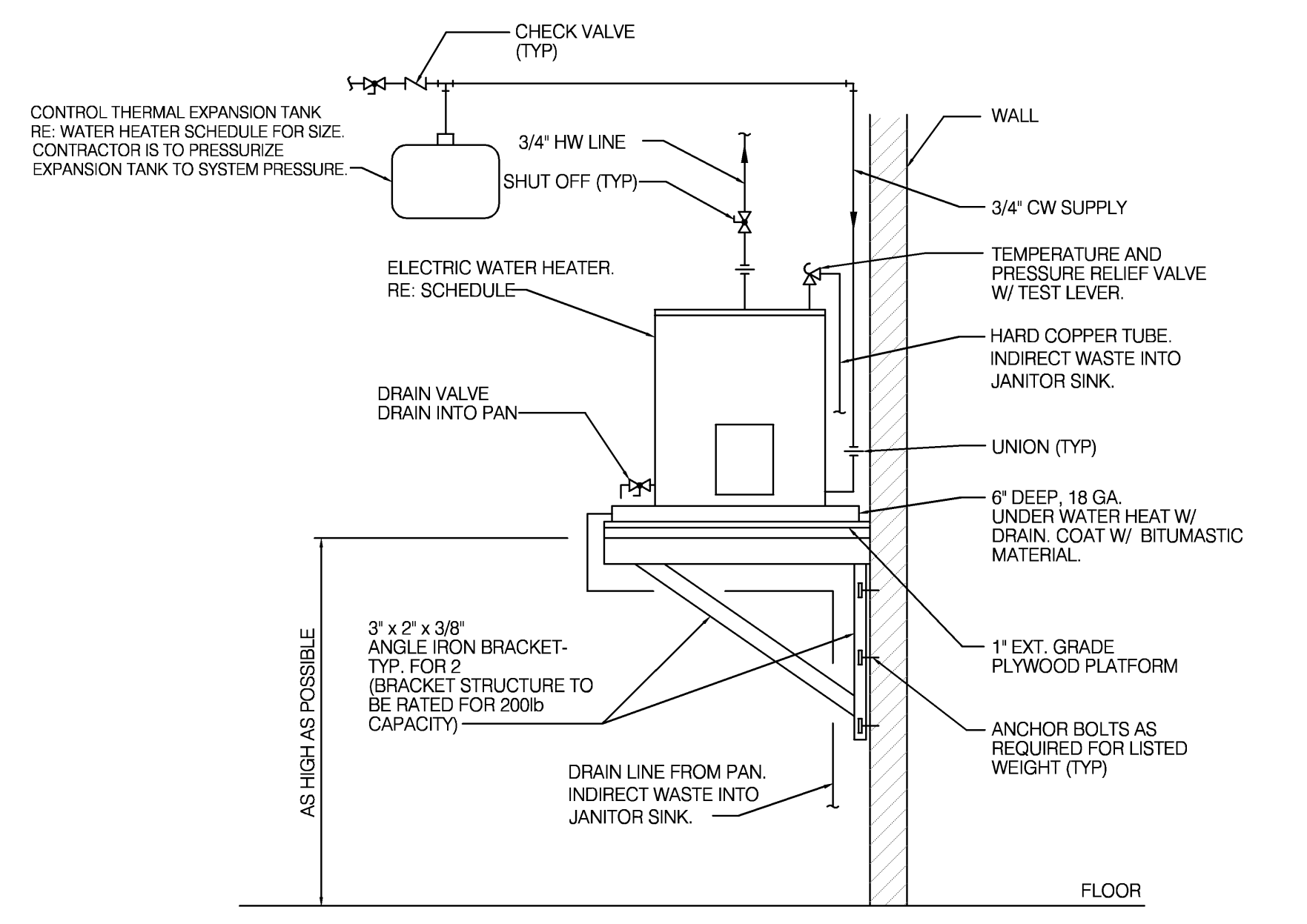
WATER HEATER SCHEDULE (INSTANT)

MARK NO.	MANUFACTURER	MODEL NO.	RECOVERY (GPM)	INPUT (KW)	ELECTRICAL			NOTES
					VOLT	Ø	HZ	
DWH-2	EEMAX	SP-8208-FC	57@1.0	8.3	208	1	60	1
DWH-3	EEMAX	SP-8208-FC	57@1.0	8.3	208	1	60	1

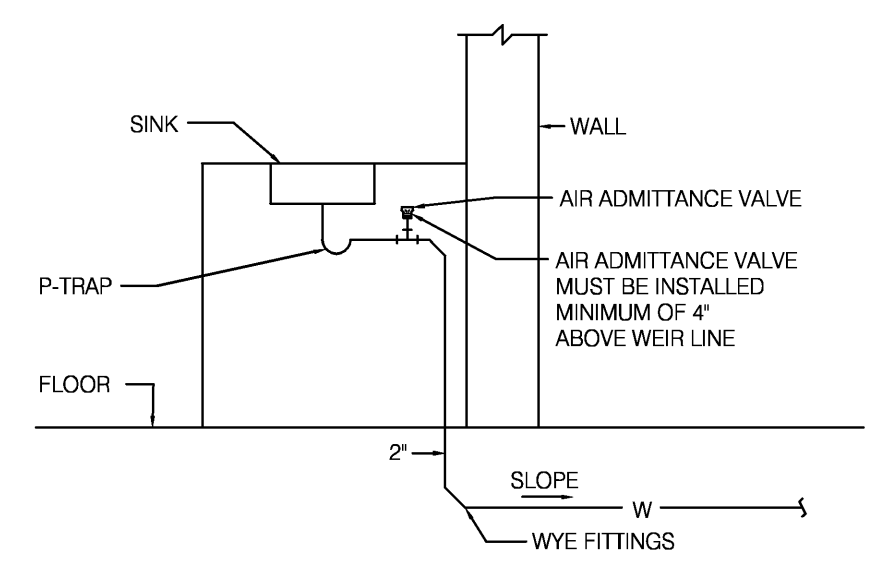
NOTES: 1. MOUNT TO BACK OF CABINET WALL AND PROVIDE FAUCET WITH 1.0 GPM AERATOR.



1 TYPICAL CORE THRU FLOOR LOCATION DETAIL
 NO SCALE



2 WALL MOUNTED ELECTRIC WATER HTR DETAIL
 NO SCALE
 DWH-4



3 AIR ADMITTANCE VALVE SINK VENTING DETAIL
 NO SCALE

PLUMBING SYMBOLS

- EXISTING TO REMAIN
- x — x — x — EXISTING TO BE REMOVED
- NEW PIPING
- FLOW ARROW
- CW — COLD WATER
- HW — HOT WATER
- HWR — HOT WATER RETURN
- SD — STORM DRAIN ABOVE GND./FLOOR ABOVE
- SD — STORM DRAIN BELOW GROUND/BELOW FLOOR
- V — SANITARY VENT ABOVE GND./FLOOR ABOVE
- V — SANITARY VENT BELOW FLOOR
- W — SANITARY WASTE ABOVE GND./FLOOR ABOVE
- W — SANITARY WASTE BELOW GROUND
- BALANCE VALVE
- SHUT OFF VALVE
- GAS COCK
- FLOOR DRAIN
- PIPE DROP/PIPE RISE
- BOTTOM OUTLET TEE
- TOP OUTLET TEE
- WH — WALL HYDRANT
- CO — CLEAN OUT
- VTR — SANITARY VENT THROUGH ROOF
- EQUIPMENT TYPE AND DESIGNATION
- PLUMBING FIXTURE DESIGNATION
- CONNECT TO EXISTING

DWG FILE: P:\0200\0408_Jackson County Historic Court House\Drawings\0408P202_201_202.dwg USER: joes FLOT DATE/TIME: 12/7/2012 10:13am