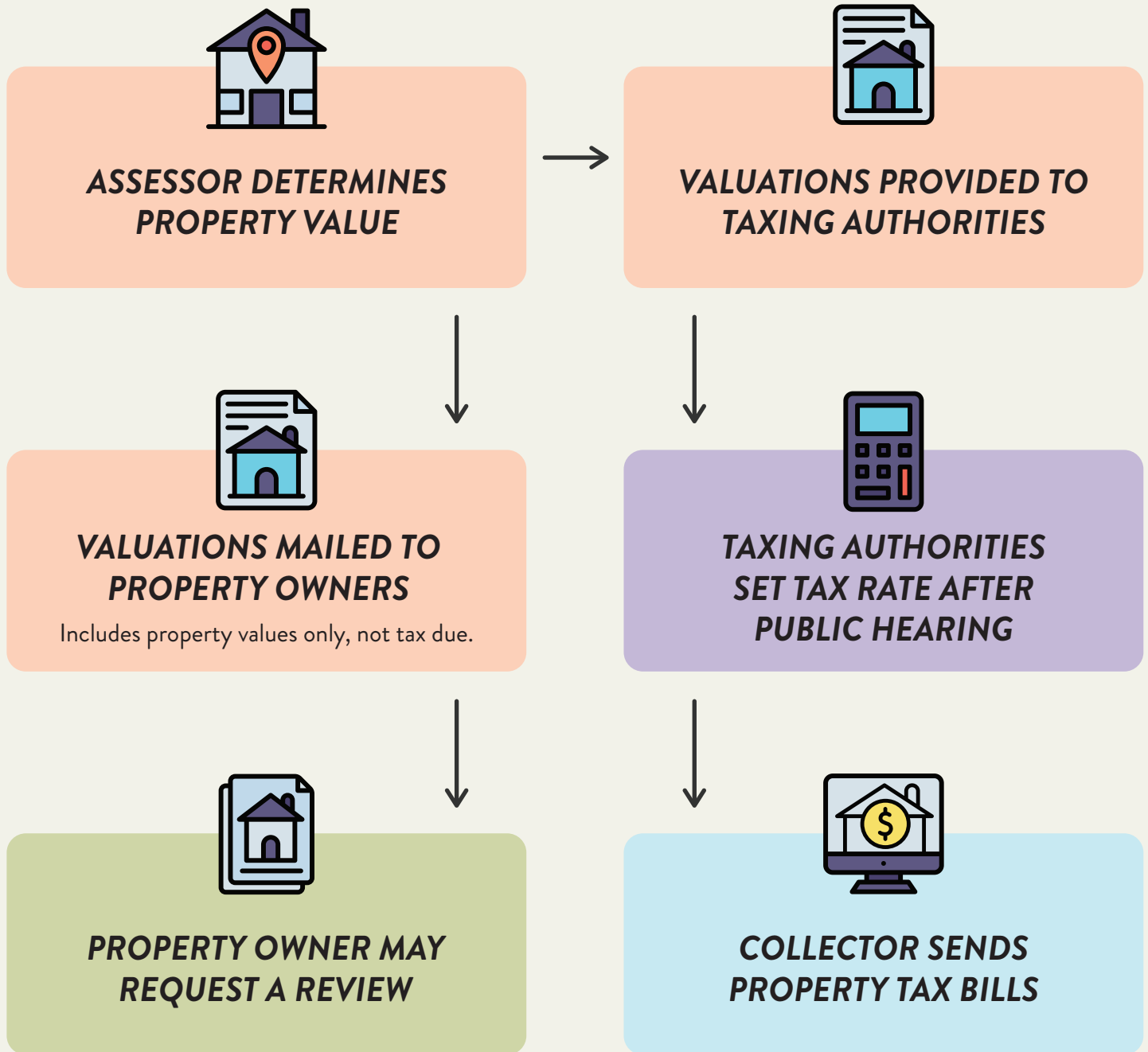


# Jackson County, Missouri

## PROPERTY ASSESSMENT, TAXING & COLLECTIONS PROCESS



 <b>COUNTY ASSESSOR</b>	 <b>TAXING AUTHORITIES</b>
 <b>BOARD OF EQUALIZATION</b>	 <b>COUNTY COLLECTOR</b>

*In order to facilitate understanding, this high-level infographic contains an overview of the process and may exclude certain administrative details.*

**ASSESSMENT@JACKSONGOV.ORG**

