

KANSAS CITY

INDEPENDENCE

BLUE SPRINGS

RAYTOWN

KANSAS CITY

LEE'S SUMMIT





GRANDVIEW

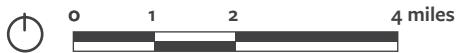
GREENWOOD

JACKSON CO.

PLEASANT HILL

Legend

-  Rock Island Corridor
-  Shared Use Path Segments
-  Existing Trail (MetroGreen)
-  Planned Trail (MetroGreen)



Truman Sports Complex

Brickyard Road

Jefferson Street

Greenwood

Phase Two - 6.9 miles

Phase One - 6.4 miles

Rock Island Spur of the Katy Trail
(Missouri State Parks)